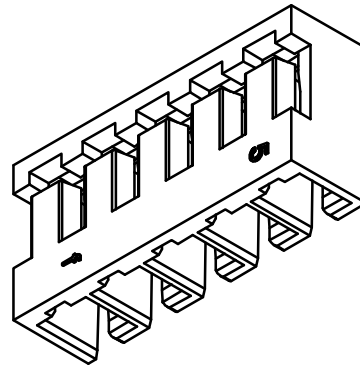
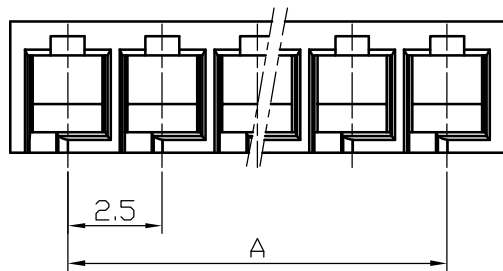
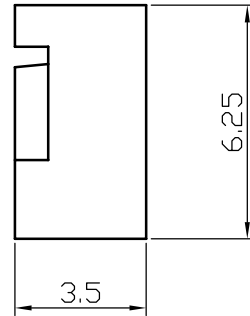
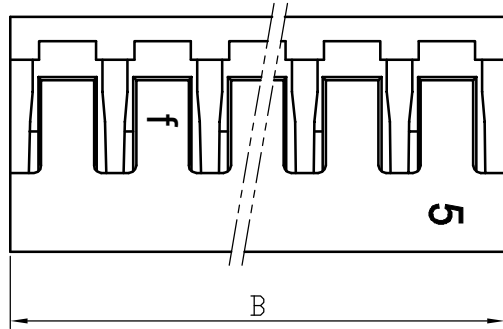





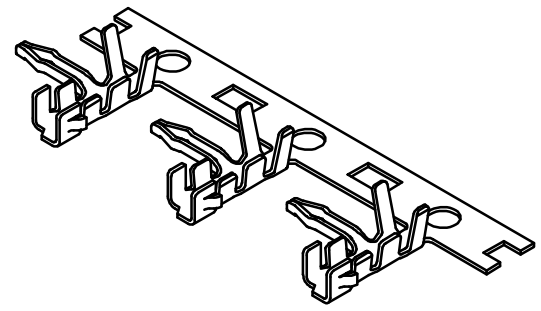
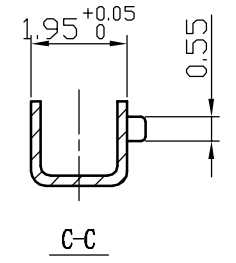
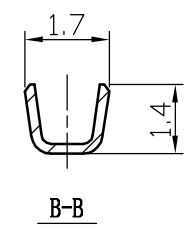
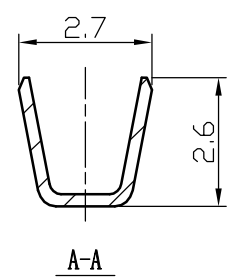
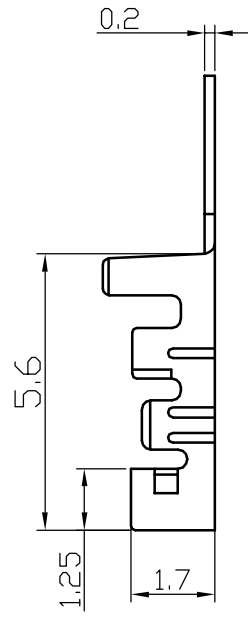
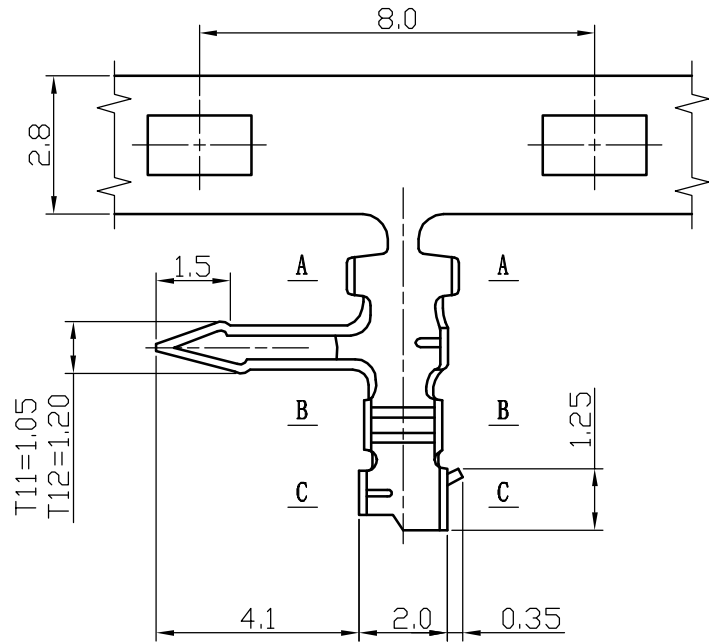
JC25 Type Housing



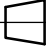


Poles	Part No.		Dimensions	
			A	B
2	BI2502-H02	JC25-2Y	2.5	5.5
3	BI2502-H03	JC25-3Y	5	8
4	BI2502-H04	JC25-4Y	7.5	10.5
5	BI2502-H05	JC25-5Y	10	13
6	BI2502-H06	JC25-6Y	12.5	15.5
7	BI2502-H07	JC25-7Y	15	18
8	BI2502-H08	JC25-8Y	17.5	20.5
9	BI2502-H09	JC25-9Y	20	23
10	BI2502-H10	JC25-10Y	22.5	25.5
11	BI2502-H11	JC25-11Y	25	28
-	-	-	-	-
16	BI2502-H16	JC25-16Y	37.5	40.5

1	Housing	PA66(UL94V-0/V-2)	1	White					
No.	Item/Material No.	Material	QTY	Remark					
Unmarked Tolerance		 Yueqing Hegxing Electronics Co., Ltd							
X. ° ±3° X. X° ±0.5°									
>0-3	>3-18	>18-50	>50-120	Unit	Scale	Design Unit	Size	Part No.	 
±0.12	±0.15	±0.3	±0.5	mm	—	Metric	A4		
Draw	Review	Approve	Material	Drawing No.			Part No.		
				Item	JC25-NY				

JC25 Type Terminal



1	Terminal	Phospher Bronze	1						
No.	Item/Material No.	Material	QTY	Remark					
Unmarked Tolerance		 Yueqing Hegxing Electronics Co., Ltd							
X. ° ±3° X. X° ±0.5°									
>0-3	>3-18	>18-50	>50-120	Unit	Scale	Design Unit	Size	Part No.	 
±0.12	±0.15	±0.3	±0.5	mm	—	Metric	A4		
Draw	Review	Approve	Material	Drawing No.			Part No.		
				Item	JC25-T				