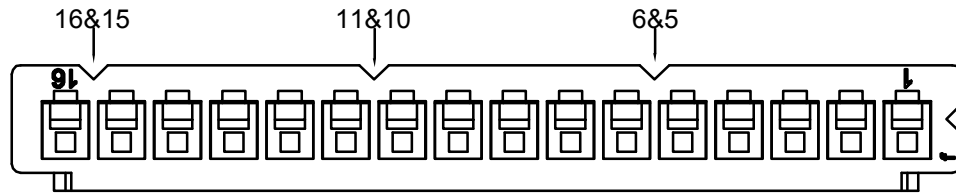
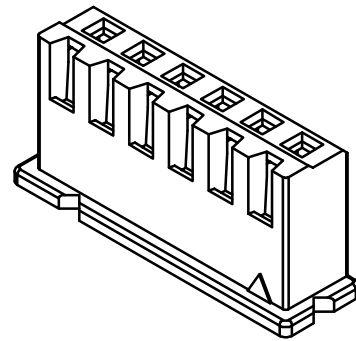
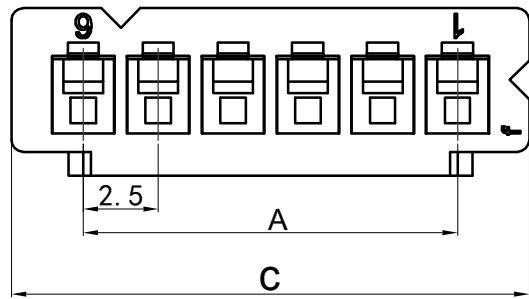
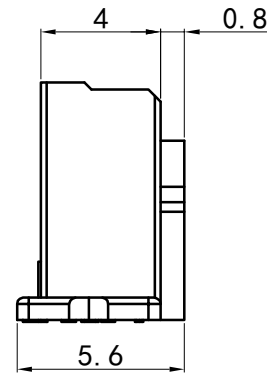
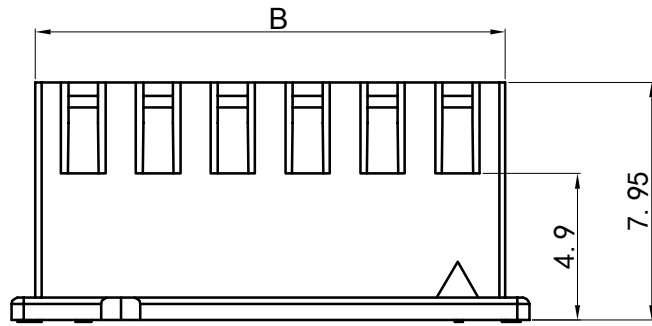





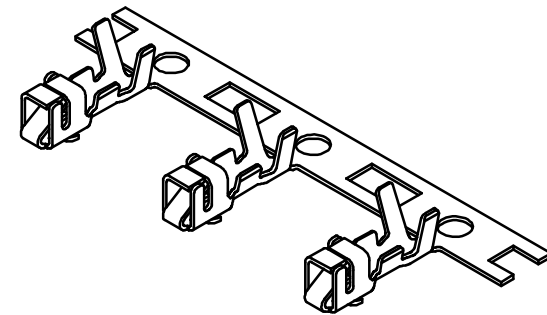
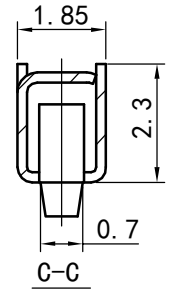
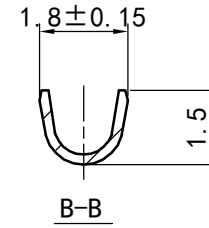
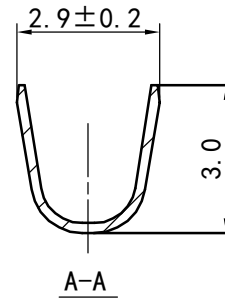
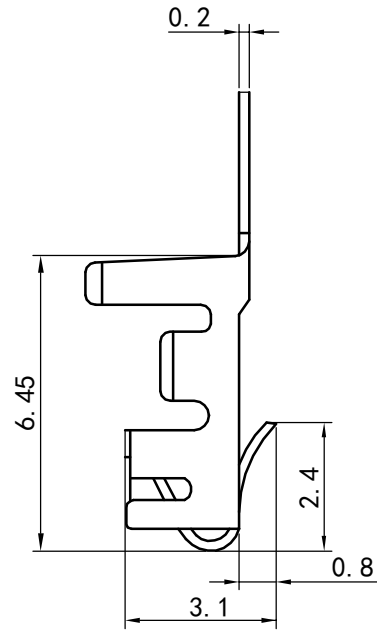
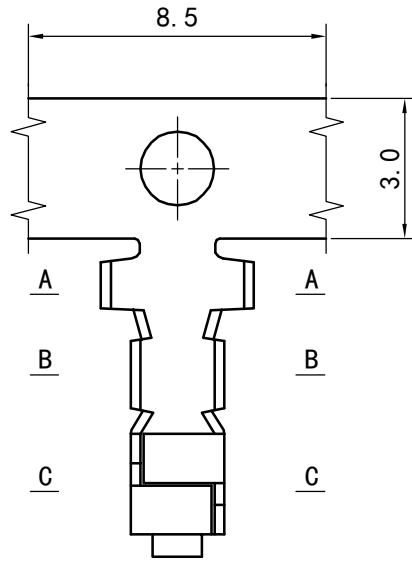
XH Type Housing


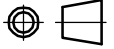


Poles	Part No.		Dimensions		
			A	B	C
2	WB2501-H02	XH-2Y	2.5	5.7	7.3
3	WB2501-H03	XH-3Y	5	8.2	9.8
4	WB2501-H04	XH-4Y	7.5	10.7	12.3
5	WB2501-H05	XH-5Y	10	13.2	14.8
6	WB2501-H06	XH-6Y	12.5	15.7	17.3
7	WB2501-H07	XH-7Y	15	18.2	19.8
8	WB2501-H08	XH-8Y	17.5	20.7	22.3
9	WB2501-H09	XH-9Y	20	23.2	24.8
10	WB2501-H10	XH-10Y	22.5	25.7	27.3
11	WB2501-H11	XH-11Y	25	28.2	29.8
-	-	-	-	-	-
20	WB2501-H20	XH-20Y	47.5	50.7	52.3

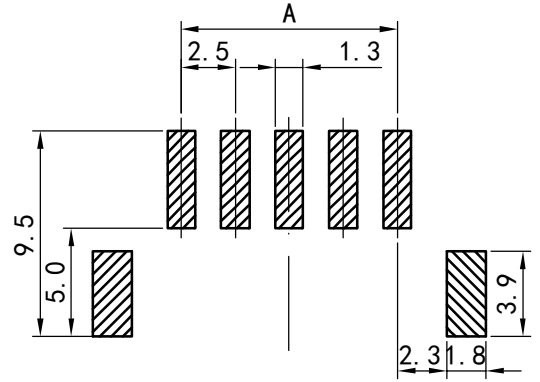
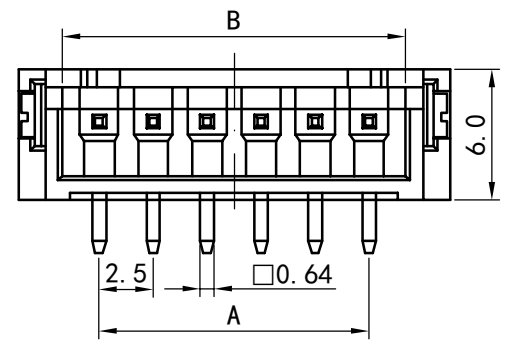
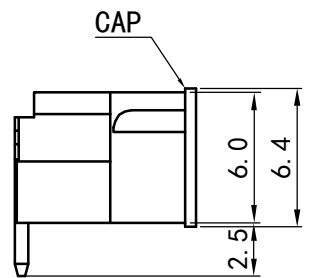
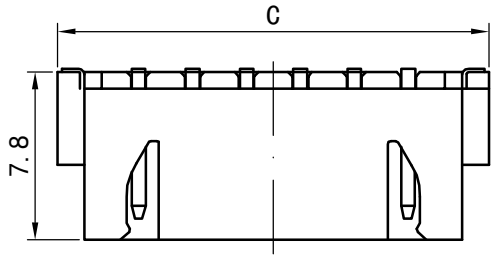
1	Housing	PA66(UL94V-0/V-2)	1	White					
No.	Item/Material No.	Material	QTY	Remark					
Unmarked Tolerance		 Yueqing Hegxing Electronics Co., Ltd							
X. ° ±3° X. X° ±0.5°									
>0-3	>3-18	>18-50	>50-120	Unit	Scale	Design Unit	Size	Part No.	 
±0.12	±0.15	±0.3	±0.5	mm	—	Metric	A4		
Draw	Review	Approve	Material	Drawing No.			Part No.		
				Item	XH-NY				

XH Type Terminal

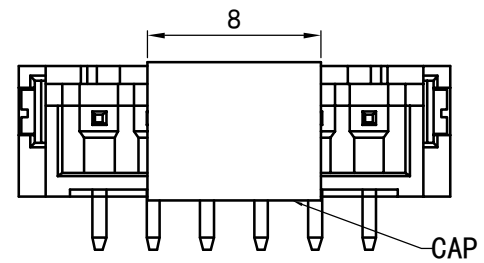


1	WB2501-T	Phospher Bronze	1						
No.	Item/Material No.	Material	QTY	Remark					
Unmarked Tolerance		 Yueqing Hegxing Electronics Co., Ltd							
X. ° ±3° X. X° ±0.5°									
>0-3	>3-18	>18-50	>50-120	Unit	Scale	Design Unit	Size	Part No.	
±0.12	±0.15	±0.3	±0.5	mm	—	Metric	A4		
Draw	Review	Approve	Material	Drawing No.			Part No.		
				Item	XH-T11				

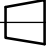
XH Type Wafer



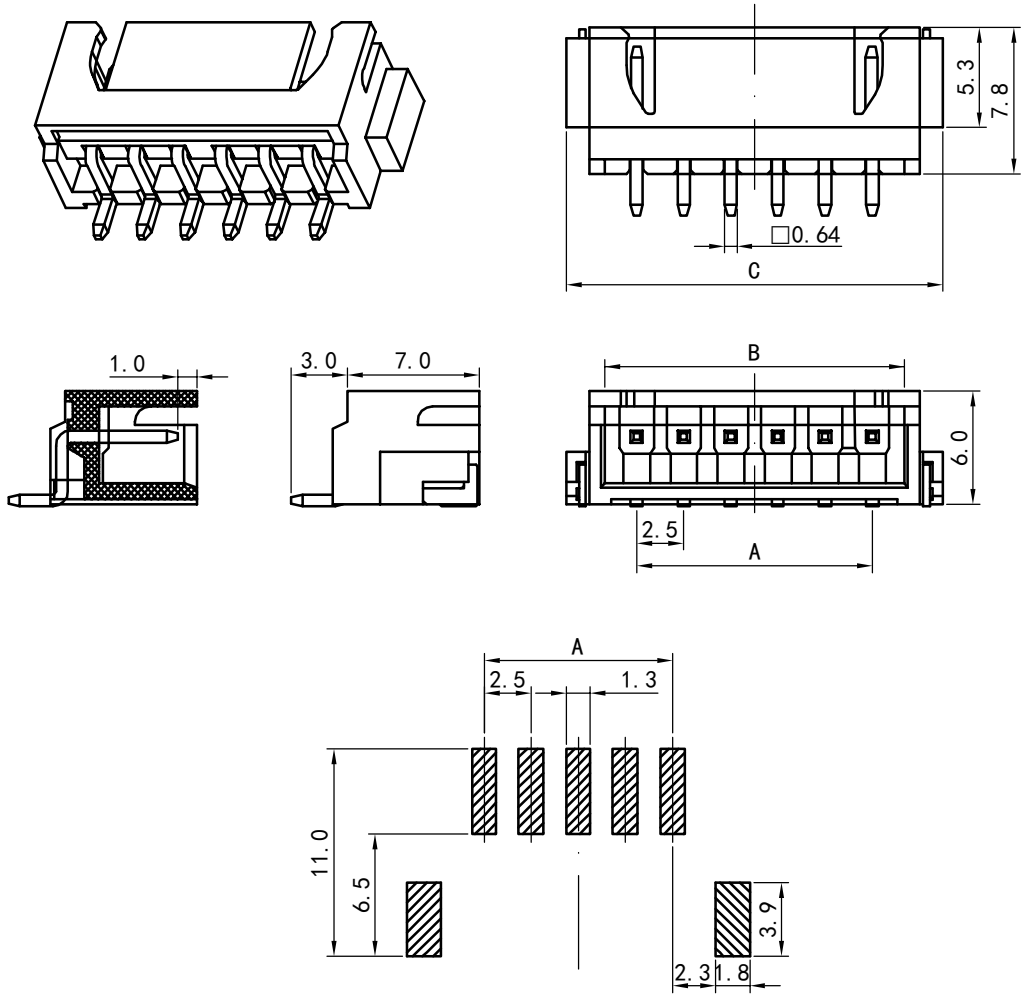
PCB Layout



Poles	PAWDrt No.		Dimensions		
			A	B	C
2	WB2501-ST02	XH-2AB	2.5	5.9	10
3	WB2501-ST03	XH-3AB	5	8.4	12.5
4	WB2501-ST04	XH-4AB	7.5	10.9	15
5	WB2501-ST05	XH-5AB	10	13.4	17.5
6	WB2501-ST06	XH-6AB	12.5	15.9	20
7	WB2501-ST07	XH-7AB	15	18.4	22.5
8	WB2501-ST08	XH-8AB	17.5	20.9	25
9	WB2501-ST09	XH-9AB	20	23.4	27.5
10	WB2501-ST10	XH-10AB	22.5	25.9	30
11	WB2501-ST11	XH-11AB	25	28.4	32.5
12	WB2501-ST12	XH-12AB	27.5	30.9	35
13	WB2501-ST13	XH-13AB	30	33.4	37.5
14	WB2501-ST14	XH-14AB	32.5	35.9	40
15	WB2501-ST15	XH-15AB	35	38.4	42.5
16	WB2501-ST16	XH-16AB	37.5	40.9	45

4	Cap	LCP	1						
3	Soldering Lug	Phosphor Bronze	2						
2	Pin	Tin Plated Brass	N						
1	Housing	LCP	1						
No.	Item/Material No.	Material	QTY	Remark					
Unmarked Tolerance		 <b>Yueqing Hegxing Electronics Co., Ltd</b>							
X.° ±3° X.X° ±0.5°									
>0-3	>3-18	>18-50	>50-120	Unit	Scale	Design Unit	Size	Part No.	 
±0.12	±0.15	±0.3	±0.5	mm	—	Metric	A4		
Draw	Review	Approve	Material	Drawing No.			Part No.		
				Item	XH-NAB				

XH Type Wafer



PCB Layout

Poles	PAWDrt No.		Dimensions		
			A	B	C
2	WB2501-SS02	XH-2AWB	2.5	5.9	10
3	WB2501-SS03	XH-3AWB	5	8.4	12.5
4	WB2501-SS04	XH-4AWB	7.5	10.9	15
5	WB2501-SS05	XH-5AWB	10	13.4	17.5
6	WB2501-SS06	XH-6AWB	12.5	15.9	20
7	WB2501-SS07	XH-7AWB	15	18.4	22.5
8	WB2501-SS08	XH-8AWB	17.5	20.9	25
9	WB2501-SS09	XH-9AWB	20	23.4	27.5
10	WB2501-SS10	XH-10AWB	22.5	25.9	30
11	WB2501-SS11	XH-11AWB	25	28.4	32.5
12	WB2501-SS12	XH-12AWB	27.5	30.9	35
13	WB2501-SS13	XH-13AWB	30	33.4	37.5
14	WB2501-SS14	XH-14AWB	32.5	35.9	40
15	WB2501-SS15	XH-15AWB	35	38.4	42.5
16	WB2501-SS16	XH-16AWB	37.5	40.9	45

3	Soldering Lug	Phosphor Bronze	2						
2	Pin	Tin Plated Brass	N						
1	Housing	LCP	1						
No.	Item/Material No.	Material	QTY	Remark					
Unmarked Tolerance		Yueqing Hegxing Electronics Co., Ltd							
X.° ±3° X.X° ±0.5°									
>0-3	>3-18	>18-50	>50-120	Unit	Scale	Design Unit	Size	Part No.	
±0.12	±0.15	±0.3	±0.5	mm	—	Metric	A4		
Draw	Review	Approve	Material	Drawing No.			Part No.		
				Item	XH-NAWB				