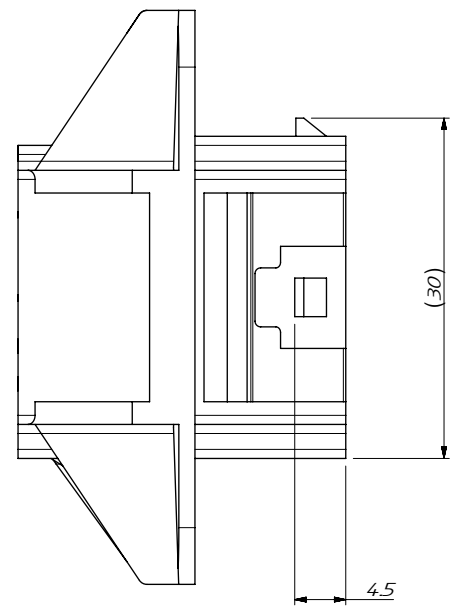
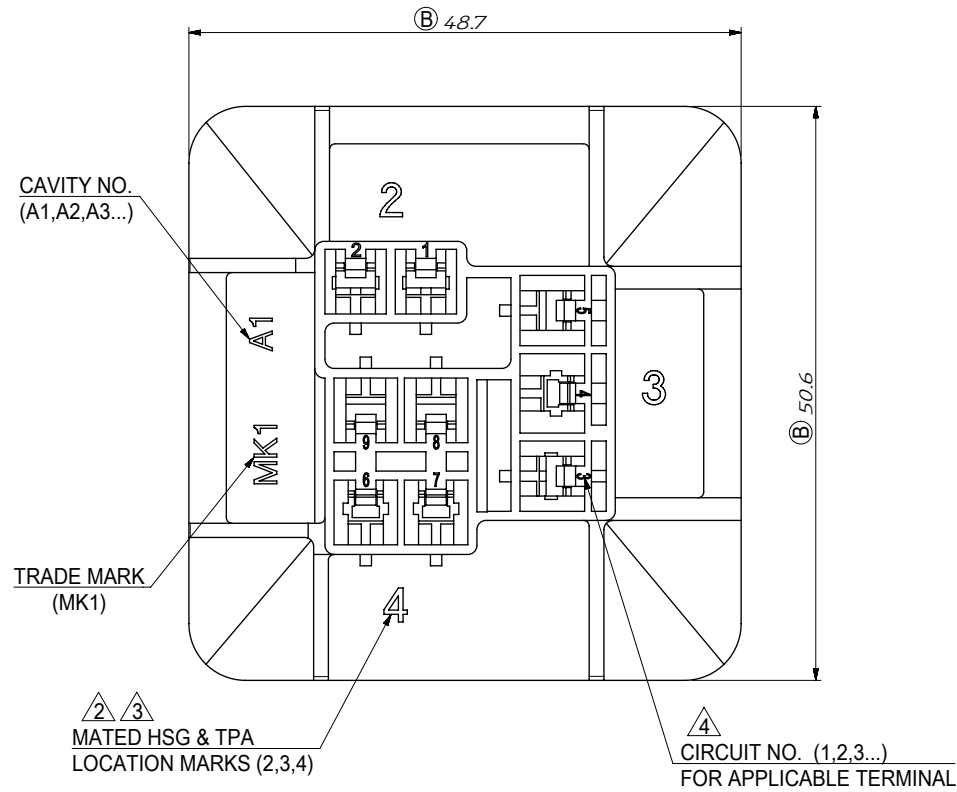
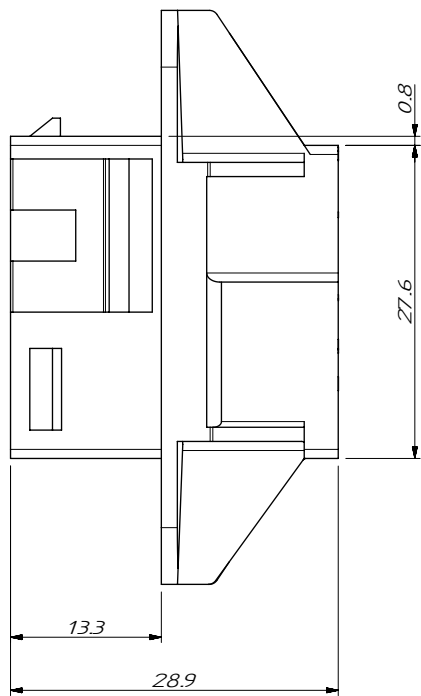
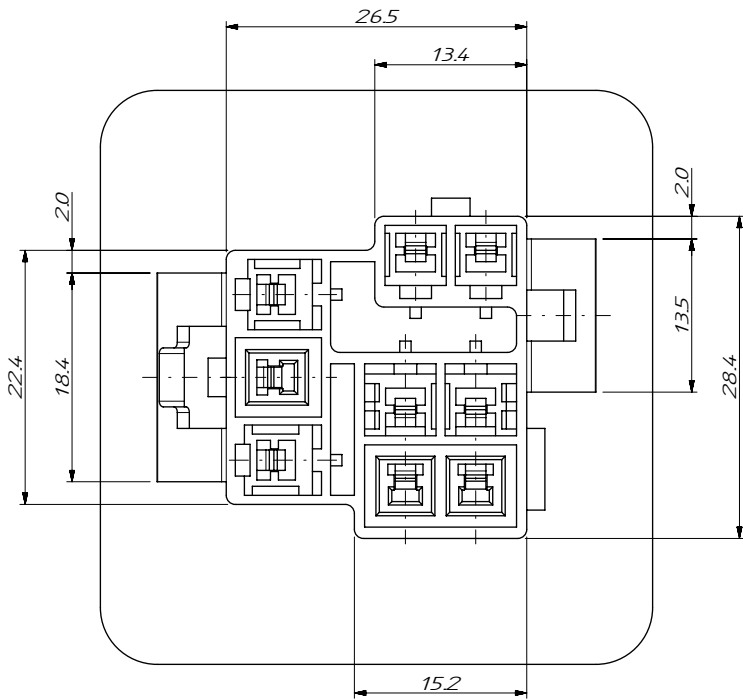


RECOMMENDED PANNEL DIMENSION
PANEL(CHASSIS) THICKNESS : 1.5mm
(GENERAL TOLETANVE : ± 0.1mm)



NOTES.

1. MATERIAL : PET/PC, UL94V-0, UNFILLED G/F, COLOR : NATURAL
GLOW WIRE CAPABLE HAVING AN IEC GWIT RATING OF 760 DEGREEE C FOR THIS PRODUCT
2. MATED HOUSING : 35151-021*/*219 (FOR 2CIRCUIT HOUSING)
35151-031*/*319 (FOR 3CIRCUIT HOUSING)
35151-041*/*419 (FOR 4CIRCUIT HOUSING)
MATED HOUSING ARE TO BE MATED ACCORDING TO LOCATION MARKS
3. MATED T.P.A. : 35150-029* (2CIRCUIT TPA FOR 2 AND 4CIRCUIT HOUSING)
35150-039* (3CIRCUITS TPA FOR 3CRICTUIT HOUSING)
MATED TPA ARE TO BE MATED ACCORDING TO LOCATION MARKS.
(LOCATION MARK 4, 2X2CIRCUIT TPA ARE MATING)
4. APPLICABLE TERMINAL : 35745-0*10 (1,2,3 CIRCUIT)
35746-0*10 (4,6,7 CIRCUIT)
35747-0*10 (5,8,9 CIRCUIT)
APPLICABLE TERMINAL ARE TO BE INSERTED ACCORDING TO CRICUIT NO.
5. CONNECTORS ARE NOT TO BE MATED OR UNMATED WHILE CIRCUITS ARE LIVE.

THIS DRAWING CONTAINS INFORMATION THAT IS PROPRIETARY TO HGX ELECTRONIC TECHNOLOGIES, LLC AND SHOULD NOT BE USED WITHOUT WRITTEN PERMISSION											
SYMBOLS		DIMENSION UNITS		SCALE		CURRENT REV DESC:				YUEQING HEGXING ELECTRONICS CO.,LTD	
▽ = 0		mm		1.5:1		EC NO: 616990 DRWN: SCHONG03 2019/03/19 CHK'D: JBJIN 2019/05/10 APPR: JBJIN 2019/05/10				.070 MULTI W-T-W CONN. RECEPTACLE HOUSING -9P FULL FLANGE TYPE	
⏏ = 0		GENERAL TOLERANCES (UNLESS SPECIFIED)									
⏏ = 0		ANGULAR TOL ± 3.0°									
▽ = 0		4 PLACES ±				INITIAL REVISION: DRWN: JSSHIN 2018/06/21 APPR: SHCHU 2018/08/31				PRODUCT CUSTOMER DRAWING DOCUMENT NUMBER 2026500909 DOC TYPE PSD DOC PART 000 REVISION B	
▼ = 0		3 PLACES ±									
▽ = 0		2 PLACES ± 0.25									
▽ = 0		1 PLACE ± 0.35									
⊠ = 0		0 PLACES ±									
■ = 0		DRAFT WHERE APPLICABLE MUST REMAIN WITHIN DIMENSIONS		THIRD ANGLE PROJECTION		DRAWING		SERIES		MATERIAL NUMBER	
▽ = 0				A3-SIZE		202650		2026500909		CUSTOMER	
								GENERAL MARKET		SHEET NUMBER	
										1 OF 1	

DOCUMENT STATUS	RELEASE DATE
-----------------	--------------