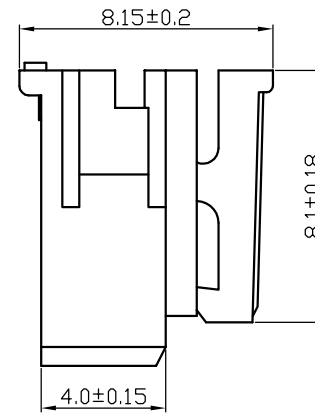
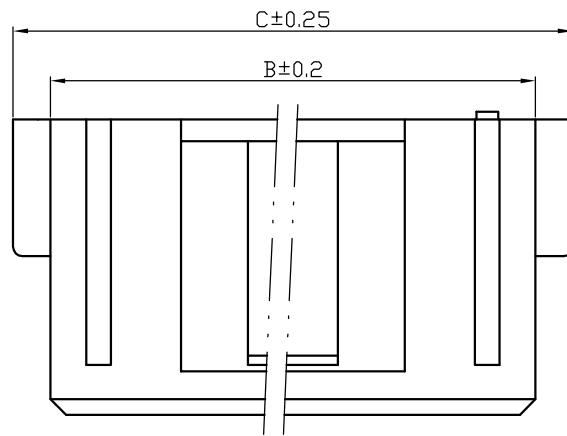
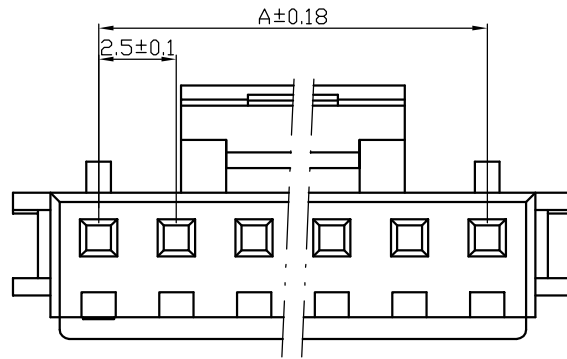


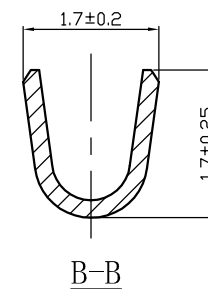
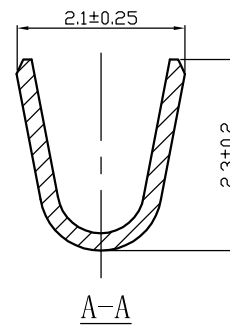
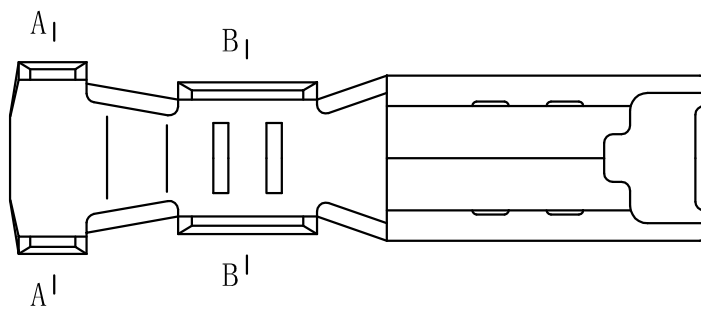
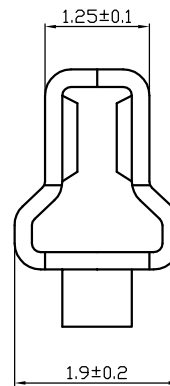
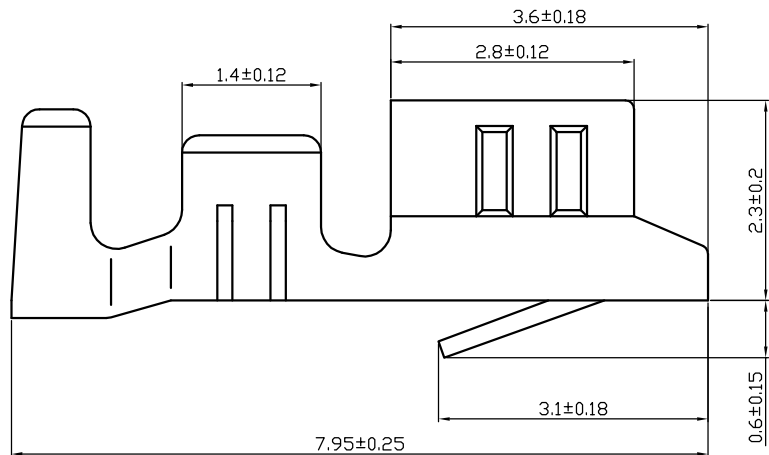
Plug Housing


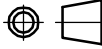


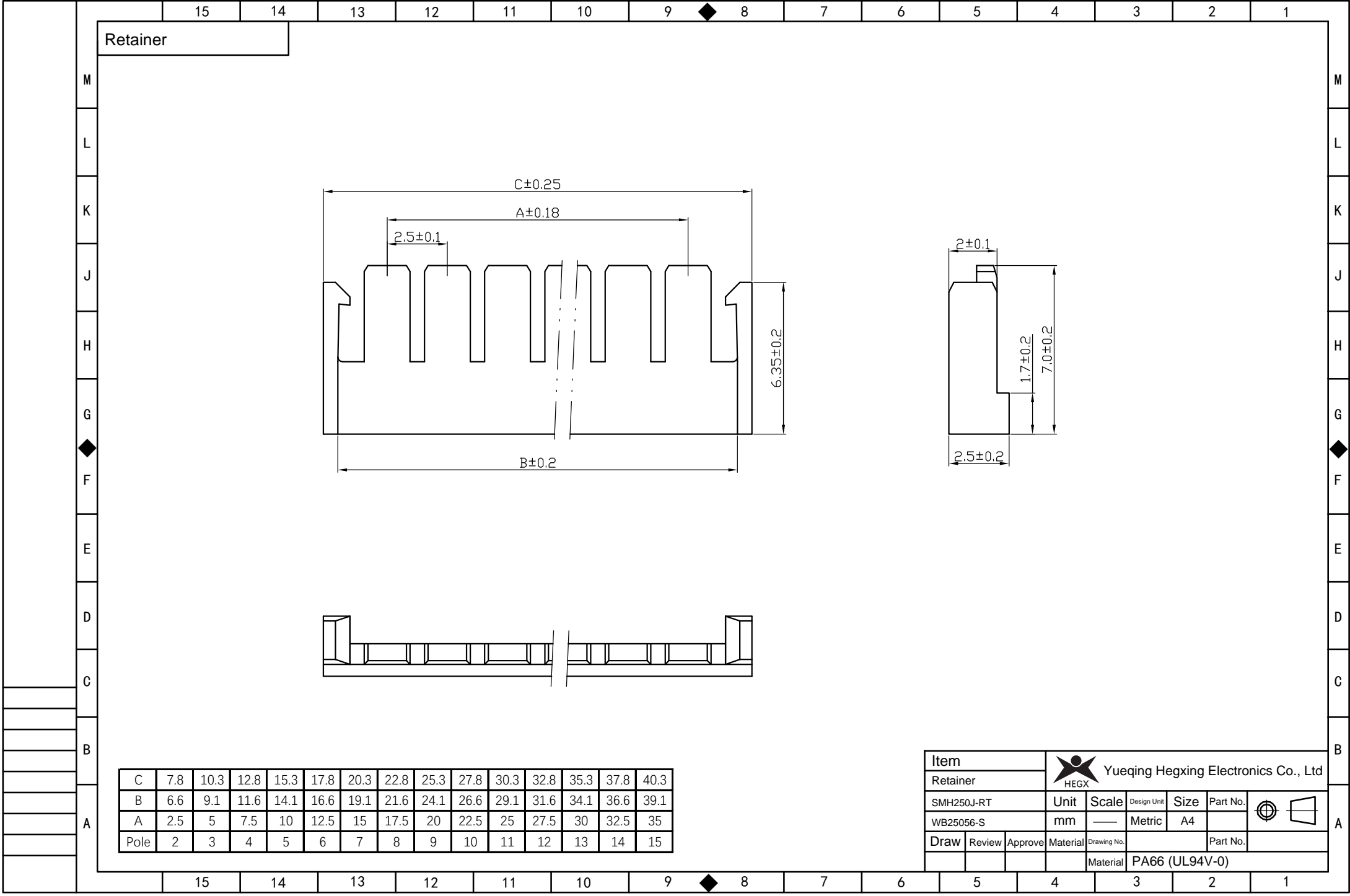
C	8	10.5	13	15.5	18	20.5	23	25.5	28	30.5	33	35.5	38	40.5
B	5.6	8.1	10.6	13.1	15.6	18.1	20.6	23.1	25.6	28.1	30.6	33.1	35.6	38.1
A	2.5	5	7.5	10	12.5	15	17.5	20	22.5	25	27.5	30	32.5	35
Pole	2	3	4	5	6	7	8	9	10	11	12	13	14	15

Item		Yueqing Hegxing Electronics Co., Ltd			
Plug Housing		HEGX			
25048HS	Unit	Scale	Design Unit	Size	Part No.
WB25056-P	mm	—	Metric	A4	
Draw	Review	Approve	Material	Drawing No.	Part No.
			Material	PA66 (UL94V-0)	

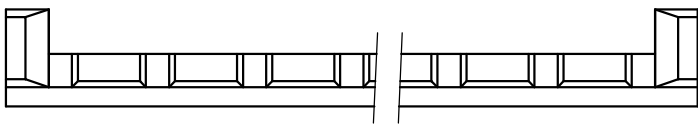
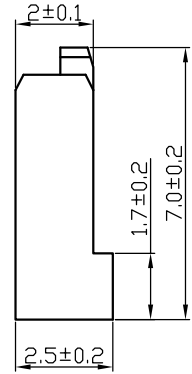
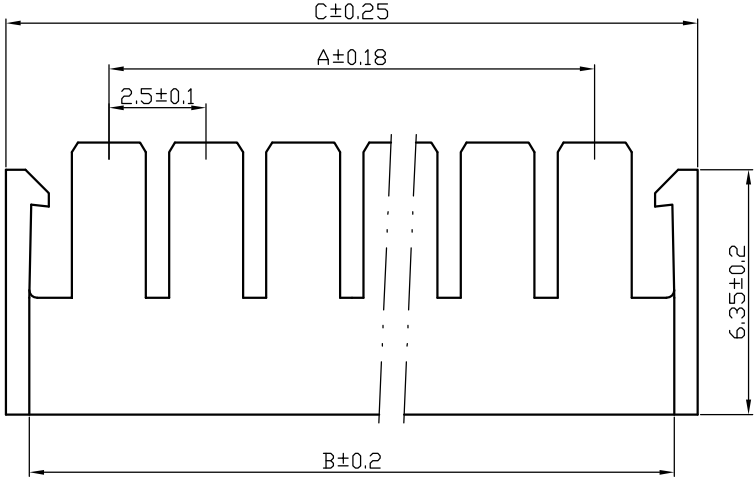
Terminal




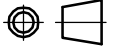
Item		 Yueqing Hegxing Electronics Co., Ltd				
Terminal		Unit	Scale	Design Unit	Size	Part No.
YST025-L		mm	—	Metric	A4	
Draw	Review	Approve	Material	Drawing No.	Part No.	
			Material	Phosphor Bronze		

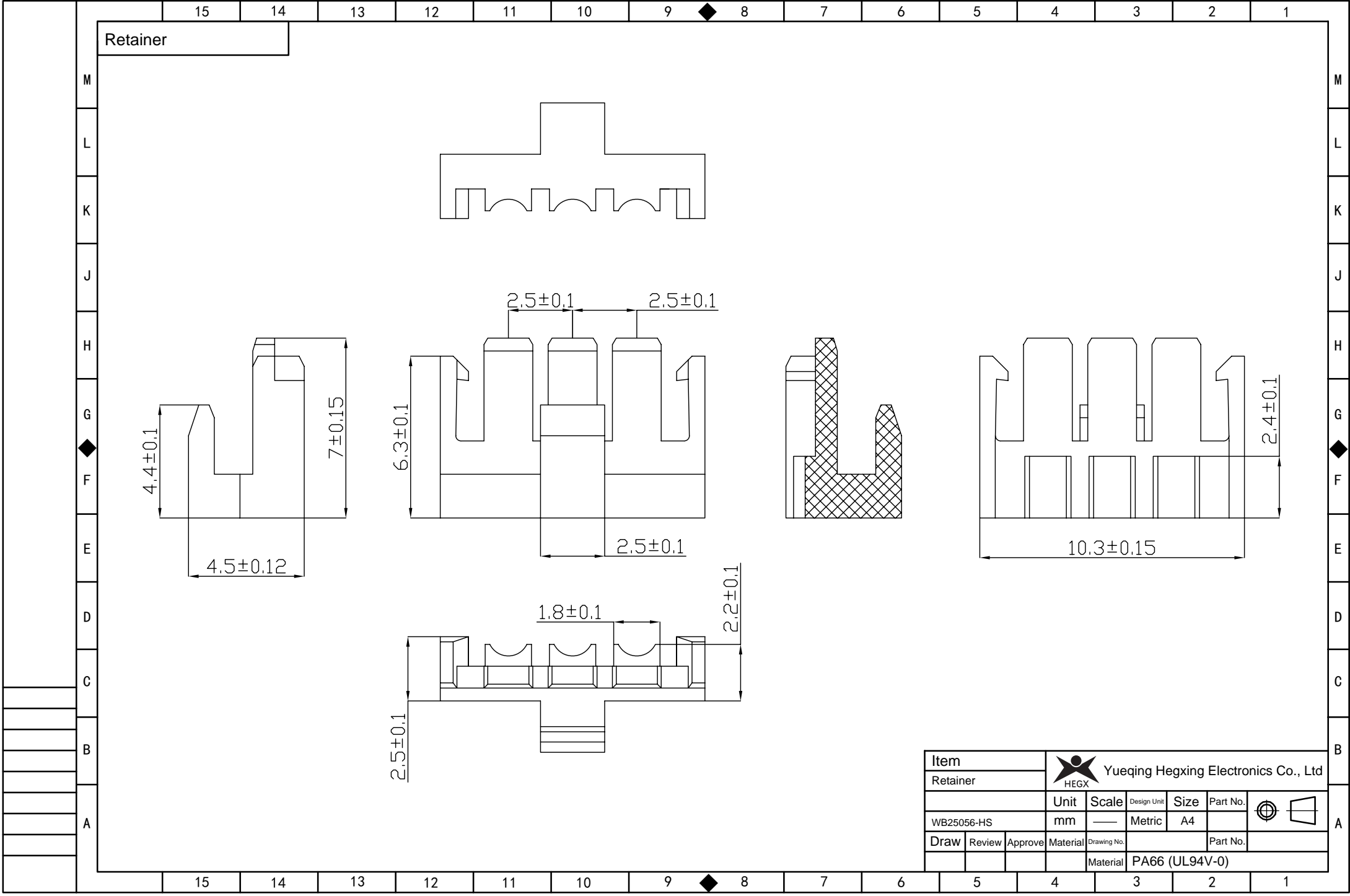





Retainer



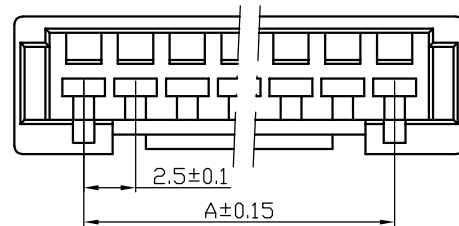
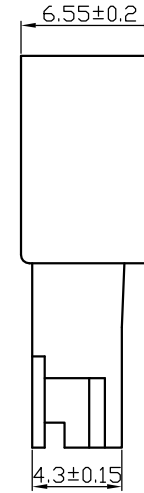
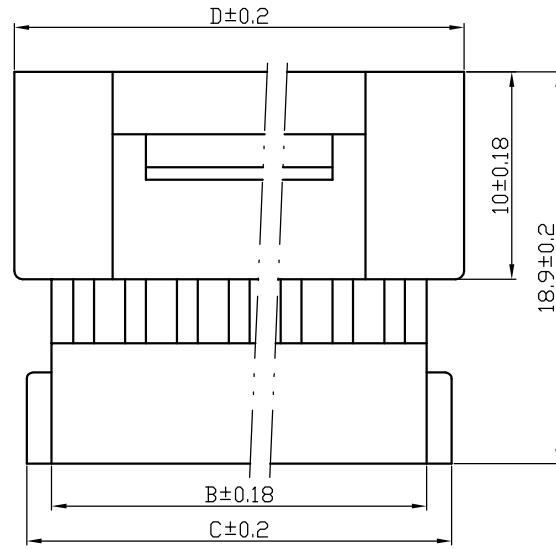
C	7.8	10.3	12.8	15.3	17.8	20.3	22.8	25.3	27.8	30.3	32.8	35.3	37.8	40.3
B	6.6	9.1	11.6	14.1	16.6	19.1	21.6	24.1	26.6	29.1	31.6	34.1	36.6	39.1
A	2.5	5	7.5	10	12.5	15	17.5	20	22.5	25	27.5	30	32.5	35
Pole	2	3	4	5	6	7	8	9	10	11	12	13	14	15

Item		 Yueqing Hegxing Electronics Co., Ltd					
Retainer		Unit	Scale	Design Unit	Size	Part No.	
SMH250J-RT		mm	—	Metric	A4		
Draw	Review	Approve	Material	Drawing No.	Part No.		
			Material	PA66 (UL94V-0)			


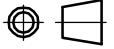


Item		 Yueqing Hegxing Electronics Co., Ltd				
Retainer		Unit	Scale	Design Unit	Size	Part No.
WB25056-HS		mm	—	Metric	A4	 
Draw	Review	Approve	Material	Drawing No.	Part No.	
			Material	PA66 (UL94V-0)		

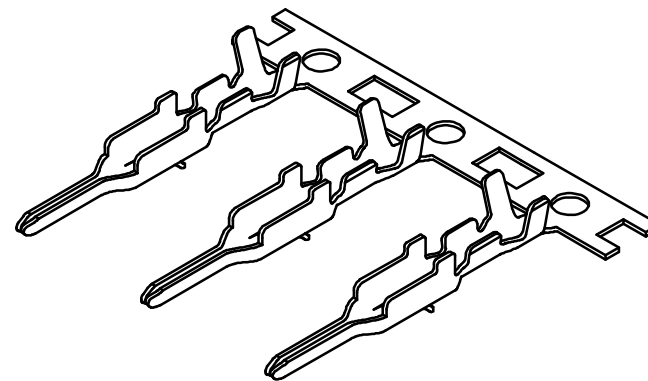
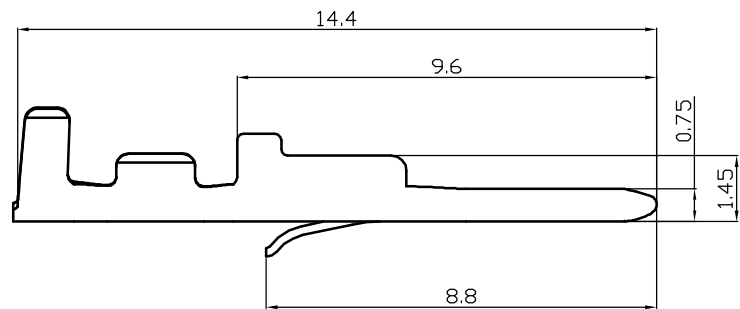
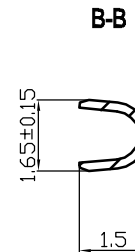
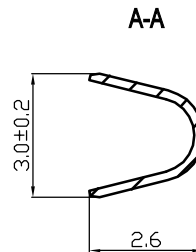
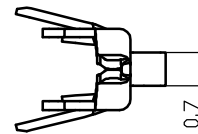
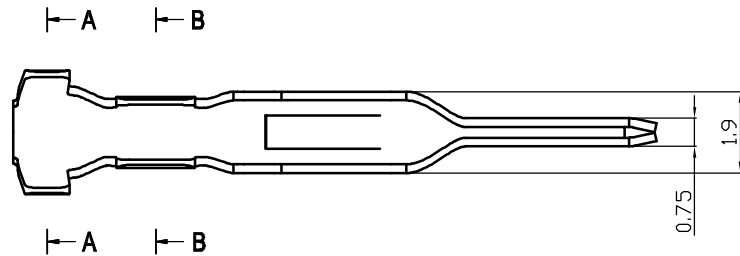
Receptacle Housing



D	9.2	11.7	14.2	16.7	19.2	21.7	24.2	26.7	29.2	31.7	34.2	36.7	39.2	41.7
C	8	10.5	13	15.5	18	20.5	23	25.5	28	30.5	33	35.5	38	40.5
B	5.6	8.1	10.6	13.1	15.6	18.1	20.6	23.1	25.6	28.1	30.6	33.1	35.6	38.1
A	2.5	5	7.5	10	12.5	15	17.5	20	22.5	25	27.5	30	32.5	35
Pole	2	3	4	5	6	7	8	9	10	11	12	13	14	15

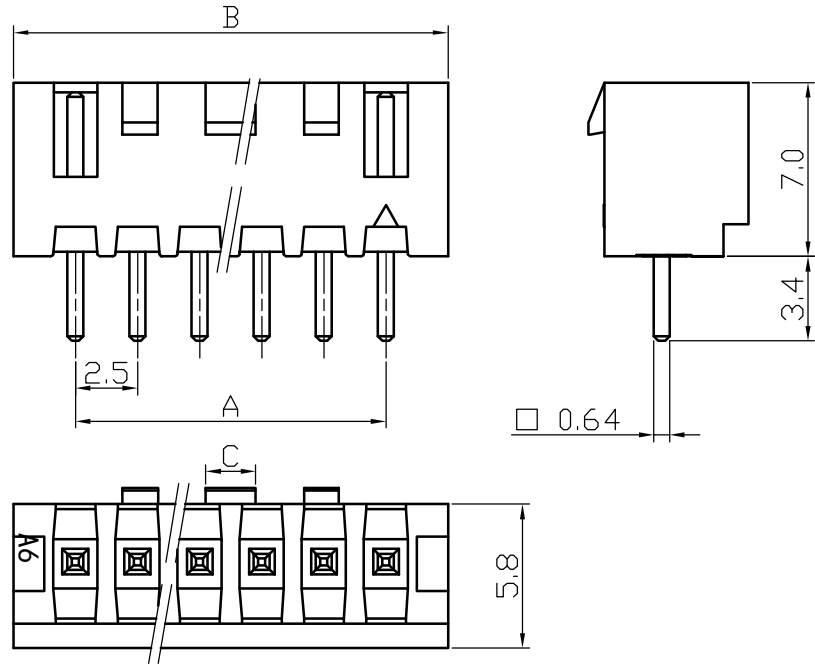
Item		 Yueqing Hegxing Electronics Co., Ltd												
Receptacle Housing		Unit	Scale	Design Unit	Size	Part No.								
25045HP		mm	—	Metric	A4									
Draw	Review	Approve	Material	Drawing No.	Part No.									
			Material	PA66 (UL94V-0)										

Terminal



Item		Yueqing Hegxing Electronics Co., Ltd				
Terminal		HEGX				
SMT025	Unit	Scale	Design Unit	Size	Part No.	
WW25044-RT	mm	—	Metric	A4		
Draw	Review	Approve	Material	Drawing No.	Part No.	
			Material	Phosphor Bronze		

SM(A)W250 Type Wafer

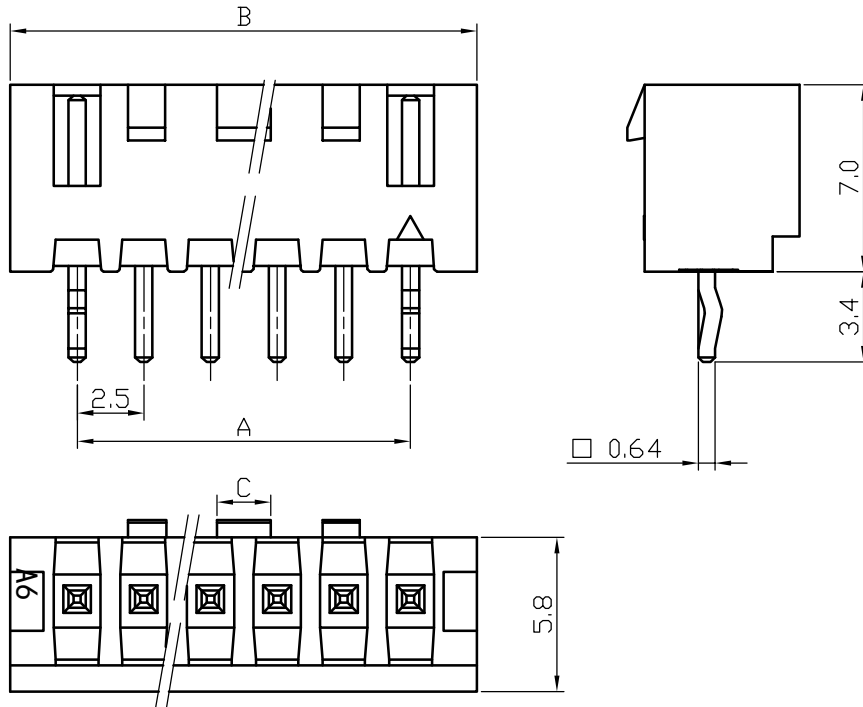


Poles	Part No.		Dimensions		
			A	B	C
2	WB2502-PT02	SM(A)W250-2A	2.5	7.5	1
3	WB2502-PT03	SM(A)W250-3A	5	10	1.2
4	WB2502-PT04	SM(A)W250-4A	7.5	12.5	2
5	WB2502-PT05	SM(A)W250-5A	10	15	2
6	WB2502-PT06	SM(A)W250-6A	12.5	17.5	8.6
7	WB2502-PT07	SM(A)W250-7A	15	20	11.1
8	WB2502-PT08	SM(A)W250-8A	17.5	22.5	13.6
9	WB2502-PT09	SM(A)W250-9A	20	25	16.1
10	WB2502-PT10	SM(A)W250-10A	22.5	27.5	18.6
11	WB2502-PT11	SM(A)W250-11A	25	30	21.1
12	WB2502-PT12	SM(A)W250-12A	27.5	32.5	23.6
13	WB2502-PT13	SM(A)W250-13A	30	35	26.1
14	WB2502-PT14	SM(A)W250-14A	32.5	37.5	28.6
15	WB2502-PT15	SM(A)W250-15A	35	40	31.1
16	WB2502-PT16	SM(A)W250-16A	37.5	42.5	33.6
17	WB2502-PT17	SM(A)W250-17A	40	45	36.1
18	WB2502-PT18	SM(A)W250-18A	42.5	47.5	38.6
19	WB2502-PT19	SM(A)W250-19A	45	50	41.1
20	WB2502-PT20	SM(A)W250-20A	47.5	52.5	43.6

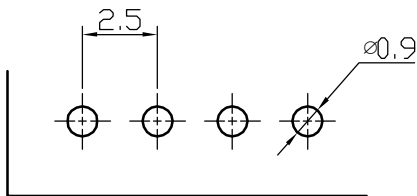
PCB Layout

2	Pin	Tin Plated Brass	N						
1	Housing	PA9T (UL94V-0)	1						
No.	Item/Material No.	Material	QTY	Remark					
Unmarked Tolerance		Yueqing Hegxing Electronics Co., Ltd							
X. ° ±3° X. X° ±0.5°									
>0-3	>3-18	>18-50	>50-120	Unit	Scale	Design Unit	Size	Part No.	
±0.12	±0.15	±0.3	±0.5	mm	—	Metric	A4		
Draw	Review	Approve	Material	Drawing No.	Part No.				
				Item	SM(A)W250-NA				

SM(A)W250 Type Wafer



Poles	Part No.		Dimensions		
			A	B	C
2	WB2502-PT02-K	SM(A)W250-2A	2.5	7.5	1
3	WB2502-PT03-K	SM(A)W250-3A	5	10	1.2
4	WB2502-PT04-K	SM(A)W250-4A	7.5	12.5	2
5	WB2502-PT05-K	SM(A)W250-5A	10	15	2
6	WB2502-PT06-K	SM(A)W250-6A	12.5	17.5	8.6
7	WB2502-PT07-K	SM(A)W250-7A	15	20	11.1
8	WB2502-PT08-K	SM(A)W250-8A	17.5	22.5	13.6
9	WB2502-PT09-K	SM(A)W250-9A	20	25	16.1
10	WB2502-PT10-K	SM(A)W250-10A	22.5	27.5	18.6
11	WB2502-PT11-K	SM(A)W250-11A	25	30	21.1
12	WB2502-PT12-K	SM(A)W250-12A	27.5	32.5	23.6
13	WB2502-PT13-K	SM(A)W250-13A	30	35	26.1
14	WB2502-PT14-K	SM(A)W250-14A	32.5	37.5	28.6
15	WB2502-PT15-K	SM(A)W250-15A	35	40	31.1
16	WB2502-PT16-K	SM(A)W250-16A	37.5	42.5	33.6
17	WB2502-PT17-K	SM(A)W250-17A	40	45	36.1
18	WB2502-PT18-K	SM(A)W250-18A	42.5	47.5	38.6
19	WB2502-PT19-K	SM(A)W250-19A	45	50	41.1
20	WB2502-PT20-K	SM(A)W250-20A	47.5	52.5	43.6

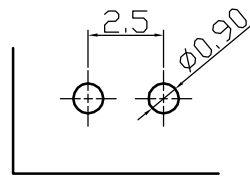
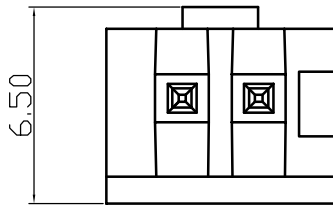
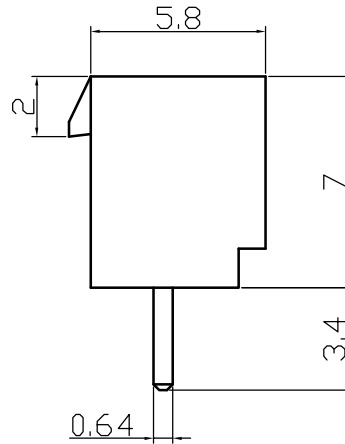
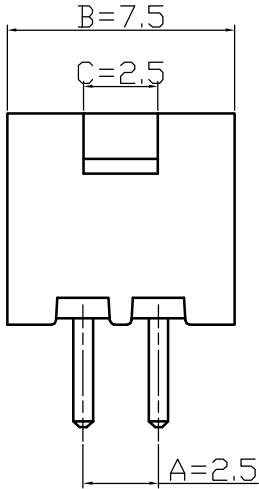


PCB Layout

2	Pin	Tin Plated Brass	N						
1	Housing	PA9T (UL94V-0)	1						
No.	Item/Material No.	Material	QTY	Remark					
Unmarked Tolerance		Yueqing Hegxing Electronics Co., Ltd							
X. ° ±3° X. X° ±0.5°									
>0-3	>3-18	>18-50	>50-120	Unit	Scale	Design Unit	Size	Part No.	
±0.12	±0.15	±0.3	±0.5	mm	—	Metric	A4		
Draw	Review	Approve	Material	Drawing No.	Part No.				
				Item	SM(A)W250 convex pin				






SM(A)W250-2A Wafer

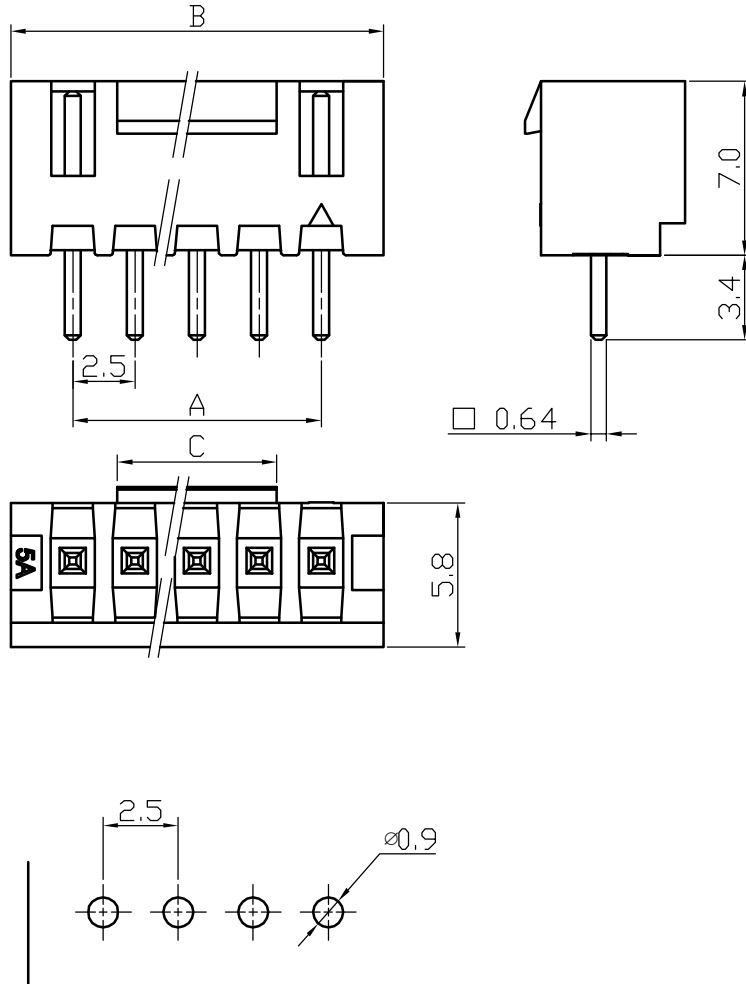


PCB Layout

Poles	Part No.		Dimensions		
			A	B	C
2	WB2502-PT02-E	SM(A)W250-2A	2.5	7.5	2.5

2	Pin	Tin Plated Brass	N						
1	Housing	PA9T (UL94V-0)	1						
No.	Item/Material No.	Material	QTY	Remark					
Unmarked Tolerance		 Yueqing Hegxing Electronics Co., Ltd							
X. ° ±3° X. X° ±0.5°									
>0-3	>3-18	>18-50	>50-120	Unit	Scale	Design Unit	Size	Part No.	 
±0.12	±0.15	±0.3	±0.5	mm	—	Metric	A4		
Draw	Review	Approve	Material	Drawing No.	Part No.				
			Item	SM(A)W250-2A					

SM(A)W250 Type Wafer

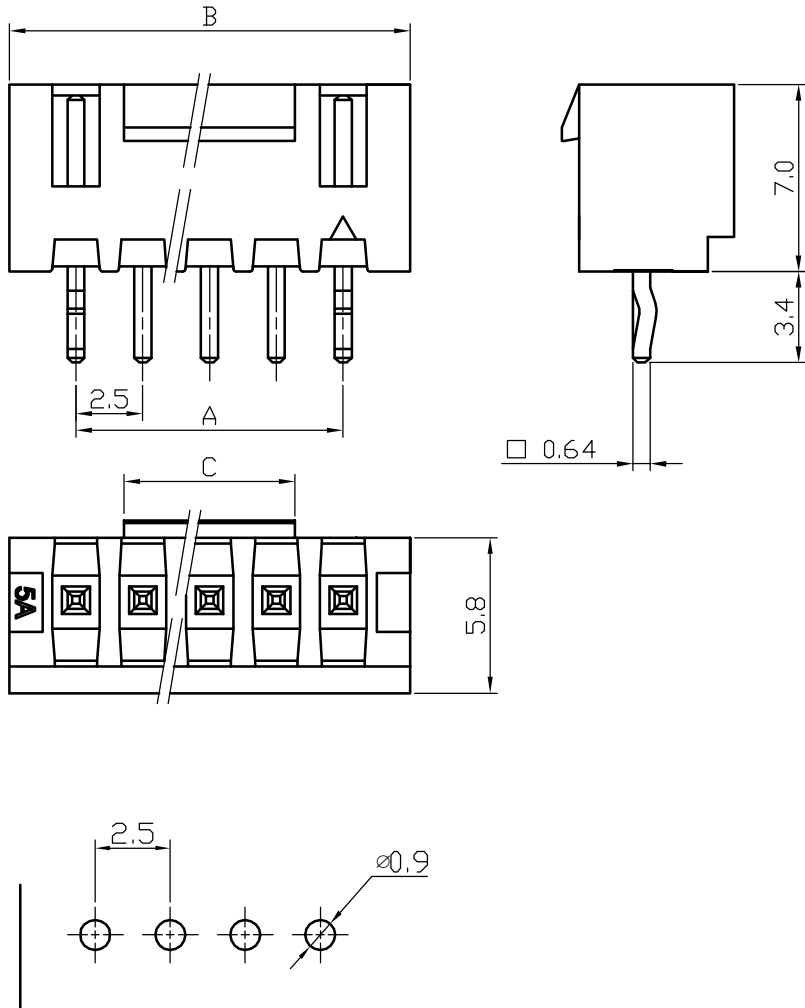


PCB Layout




Poles	Part No.		Dimensions		
			A	B	C
2	WB2502-PTB02	SM(A)W250-2A	2.5	7.5	1
3	WB2502-PTB03	SM(A)W250-3A	5	10	1.2
4	WB2502-PTB04	SM(A)W250-4A	7.5	12.5	2
5	WB2502-PTB05	SM(A)W250-5A	10	15	2
6	WB2502-PTB06	SM(A)W250-6A	12.5	17.5	8.6
7	WB2502-PTB07	SM(A)W250-7A	15	20	11.1
8	WB2502-PTB08	SM(A)W250-8A	17.5	22.5	13.6
9	WB2502-PTB09	SM(A)W250-9A	20	25	16.1
10	WB2502-PTB10	SM(A)W250-10A	22.5	27.5	18.6
11	WB2502-PTB11	SM(A)W250-11A	25	30	21.1
12	WB2502-PTB12	SM(A)W250-12A	27.5	32.5	23.6
13	WB2502-PTB13	SM(A)W250-13A	30	35	26.1
14	WB2502-PTB14	SM(A)W250-14A	32.5	37.5	28.6
15	WB2502-PTB15	SM(A)W250-15A	35	40	31.1
16	WB2502-PTB16	SM(A)W250-16A	37.5	42.5	33.6
17	WB2502-PTB17	SM(A)W250-17A	40	45	36.1
18	WB2502-PTB18	SM(A)W250-18A	42.5	47.5	38.6
19	WB2502-PTB19	SM(A)W250-19A	45	50	41.1
20	WB2502-PTB20	SM(A)W250-20A	47.5	52.5	43.6

2	Pin	Tin Plated Brass	N						
1	Housing	PA9T (UL94V-0)	1						
No.	Item/Material No.	Material	QTY	Remark					
Unmarked Tolerance		Yueqing Hegxing Electronics Co., Ltd							
X. ° ±3° X. X° ±0.5°									
>0-3	>3-18	>18-50	>50-120	Unit	Scale	Design Unit	Size	Part No.	
±0.12	±0.15	±0.3	±0.5	mm	—	Metric	A4		
Draw	Review	Approve	Material	Drawing No.	Part No.				
				Item	SM(A)W250 wide lock				

SM(A)W250 Type Wafer

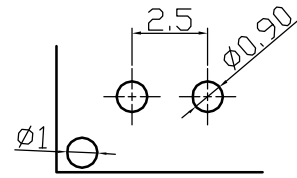
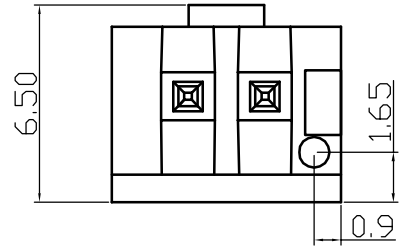
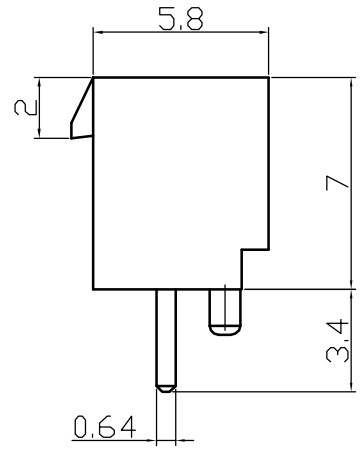
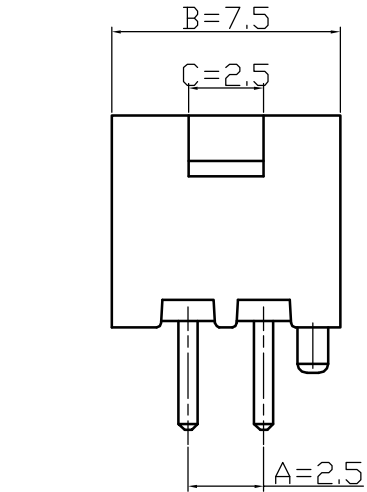


Poles	Part No.		Dimensions		
			A	B	C
2	WB2502-PTB02-K	SM(A)W250-2A	2.5	7.5	1
3	WB2502-PTB03-K	SM(A)W250-3A	5	10	1.2
4	WB2502-PTB04-K	SM(A)W250-4A	7.5	12.5	2
5	WB2502-PTB05-K	SM(A)W250-5A	10	15	2
6	WB2502-PTB06-K	SM(A)W250-6A	12.5	17.5	8.6
7	WB2502-PTB07-K	SM(A)W250-7A	15	20	11.1
8	WB2502-PTB08-K	SM(A)W250-8A	17.5	22.5	13.6
9	WB2502-PTB09-K	SM(A)W250-9A	20	25	16.1
10	WB2502-PTB10-K	SM(A)W250-10A	22.5	27.5	18.6
11	WB2502-PTB11-K	SM(A)W250-11A	25	30	21.1
12	WB2502-PTB12-K	SM(A)W250-12A	27.5	32.5	23.6
13	WB2502-PTB13-K	SM(A)W250-13A	30	35	26.1
14	WB2502-PTB14-K	SM(A)W250-14A	32.5	37.5	28.6
15	WB2502-PTB15-K	SM(A)W250-15A	35	40	31.1
16	WB2502-PTB16-K	SM(A)W250-16A	37.5	42.5	33.6
17	WB2502-PTB17-K	SM(A)W250-17A	40	45	36.1
18	WB2502-PTB18-K	SM(A)W250-18A	42.5	47.5	38.6
19	WB2502-PTB19-K	SM(A)W250-19A	45	50	41.1
20	WB2502-PTB20-K	SM(A)W250-20A	47.5	52.5	43.6

2	Pin	Tin Plated Brass	N	
1	Housing	PA9T (UL94V-0)	1	
No.	Item/Material No.	Material	QTY	Remark
Unmarked Tolerance		 Yueqing Hegxing Electronics Co., Ltd		
X. °	±3°			
>0-3	>3-18	>18-50	>50-120	Unit
±0.12	±0.15	±0.3	±0.5	mm
Scale	Design Unit	Size	Part No.	 
—	Metric	A4		
Draw	Review	Approve	Material	Drawing No.
			Item	SM(A)W250 wide lock & convex pin


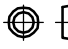

PCB Layout

SM(A)W250 Type Wafer

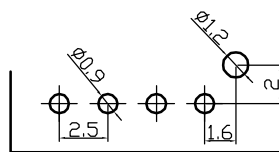
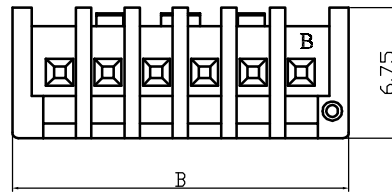
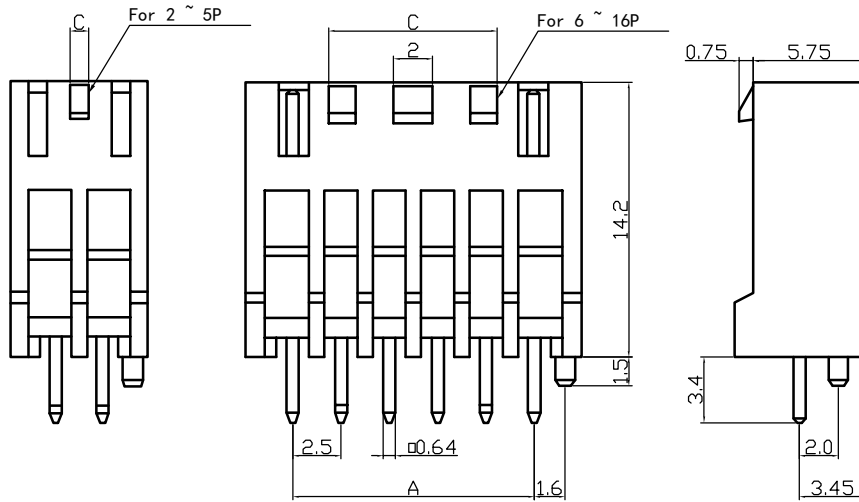


PCB Layout

Poles	Part No.		Dimensions		
			A	B	C
2	WB2502-PTB02-E	SM(A)W250-2AD	2.5	7.5	2.5

2	Pin	Tin Plated Brass	N						
1	Housing	PA9T (UL94V-0)	1						
No.	Item/Material No.	Material	QTY	Remark					
Unmarked Tolerance		 Yueqing Hegxing Electronics Co., Ltd							
X. ° ±3° X. X° ±0.5°									
>0-3	>3-18	>18-50	>50-120	Unit	Scale	Design Unit	Size	Part No.	 
±0.12	±0.15	±0.3	±0.5	mm	—	Metric	A4		
Draw	Review	Approve	Material	Drawing No.	Part No.				
			Item	SM(A)W250 enclosure					

SM(A)W250 Type Wafer

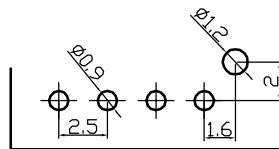
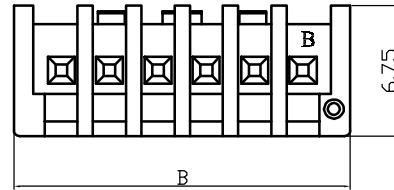
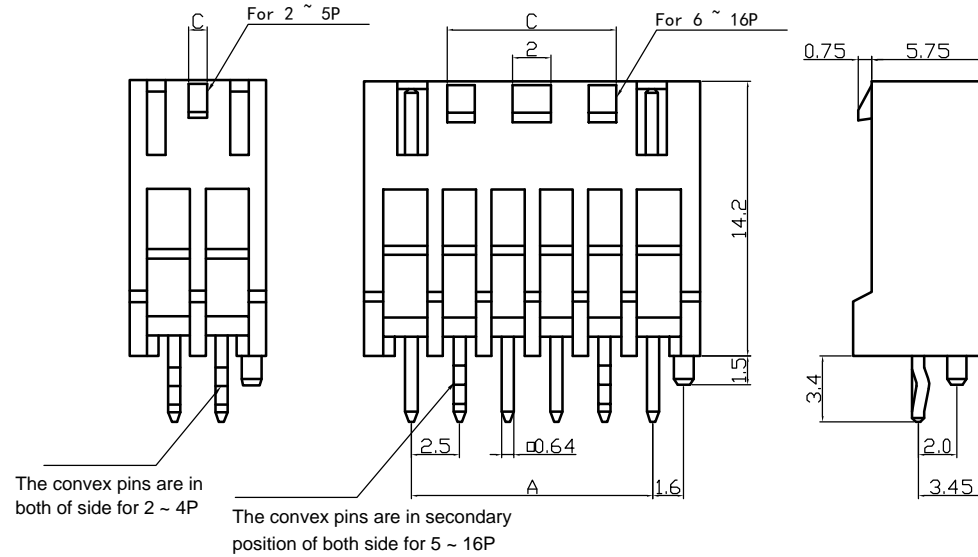


PCB Layout

Poles	Part No.		Dimensions		
			A	B	C
2	WB2502-PTB02-BH	SM(A)W250-2A-BH	2.5	7.5	1
3	WB2502-PTB03-BH	SM(A)W250-3A-BH	5	10	1.2
4	WB2502-PTB04-BH	SM(A)W250-4A-BH	7.5	12.5	2
5	WB2502-PTB05-BH	SM(A)W250-5A-BH	10	15	2
6	WB2502-PTB06-BH	SM(A)W250-6A-BH	12.5	17.5	8.6
7	WB2502-PTB07-BH	SM(A)W250-7A-BH	15	20	11.1
8	WB2502-PTB08-BH	SM(A)W250-8A-BH	17.5	22.5	13.6
9	WB2502-PTB09-BH	SM(A)W250-9A-BH	20	25	16.1
10	WB2502-PTB10-BH	SM(A)W250-10A-BH	22.5	27.5	18.6
11	WB2502-PTB11-BH	SM(A)W250-11A-BH	25	30	21.1
12	WB2502-PTB12-BH	SM(A)W250-12A-BH	27.5	32.5	23.6
13	WB2502-PTB13-BH	SM(A)W250-13A-BH	30	35	26.1
14	WB2502-PTB14-BH	SM(A)W250-14A-BH	32.5	37.5	28.6
15	WB2502-PTB15-BH	SM(A)W250-15A-BH	35	40	31.1
16	WB2502-PTB16-BH	SM(A)W250-16A-BH	37.5	42.5	33.6

2	Pin	Tin Plated Brass	N						
1	Housing	PA9T (UL94V-0)	1						
No.	Item/Material No.	Material	QTY	Remark					
Unmarked Tolerance		Yueqing Hegxing Electronics Co., Ltd							
X. ° ±3° X. X. ° ±0.5°									
>0-3	>3-18	>18-50	>50-120	Unit	Scale	Design Unit	Size	Part No.	
±0.12	±0.15	±0.3	±0.5	mm	—	Metric	A4		
Draw	Review	Approve	Material	Drawing No.	Part No.				
				Item	SM(A)W250-NA-BH				

SM(A)W250 Type Wafer

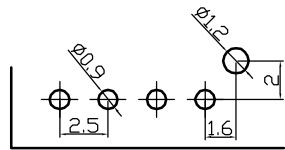
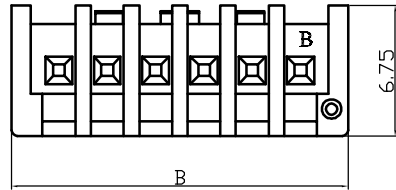
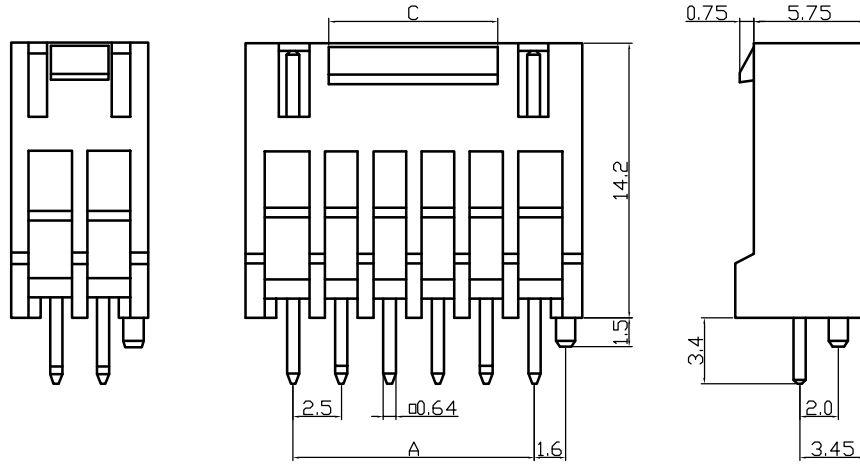


PCB Layout

Poles	Part No.		Dimensions		
			A	B	C
2	WB2502-PTB02-BH-K	SM(A)W250-2A-BH	2.5	7.5	1
3	WB2502-PTB03-BH-K	SM(A)W250-3A-BH	5	10	1.2
4	WB2502-PTB04-BH-K	SM(A)W250-4A-BH	7.5	12.5	2
5	WB2502-PTB05-BH-K	SM(A)W250-5A-BH	10	15	2
6	WB2502-PTB06-BH-K	SM(A)W250-6A-BH	12.5	17.5	8.6
7	WB2502-PTB07-BH-K	SM(A)W250-7A-BH	15	20	11.1
8	WB2502-PTB08-BH-K	SM(A)W250-8A-BH	17.5	22.5	13.6
9	WB2502-PTB09-BH-K	SM(A)W250-9A-BH	20	25	16.1
10	WB2502-PTB10-BH-K	SM(A)W250-10A-BH	22.5	27.5	18.6
11	WB2502-PTB11-BH-K	SM(A)W250-11A-BH	25	30	21.1
12	WB2502-PTB12-BH-K	SM(A)W250-12A-BH	27.5	32.5	23.6
13	WB2502-PTB13-BH-K	SM(A)W250-13A-BH	30	35	26.1
14	WB2502-PTB14-BH-K	SM(A)W250-14A-BH	32.5	37.5	28.6
15	WB2502-PTB15-BH-K	SM(A)W250-15A-BH	35	40	31.1
16	WB2502-PTB16-BH-K	SM(A)W250-16A-BH	37.5	42.5	33.6

2	Pin	Tin Plated Brass	N						
1	Housing	PA9T (UL94V-0)	1						
No.	Item/Material No.	Material	QTY	Remark					
Unmarked Tolerance		Yueqing Hegxing Electronics Co., Ltd							
X. ° ±3° X. X° ±0.5°									
>0-3	>3-18	>18-50	>50-120	Unit	Scale	Design Unit	Size	Part No.	
±0.12	±0.15	±0.3	±0.5	mm	—	Metric	A4		
Draw	Review	Approve	Material	Drawing No.	Part No.				
				Item	SM(A)W250-NA-BH convex pin				

SM(A)W250 Type Wafer

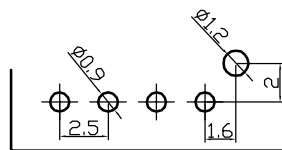
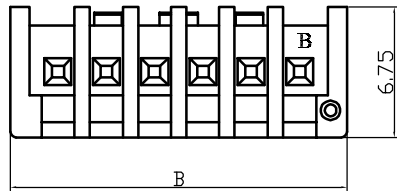
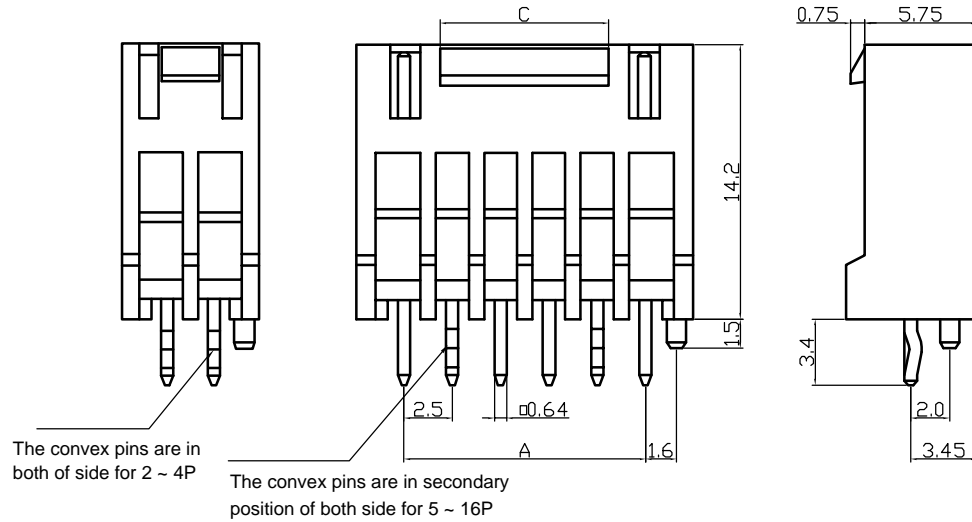


PCB Layout

Poles	Part No.		Dimensions		
			A	B	C
2	WB2502-PTB02-BH-K	SM(A)W250-2A-BH	2.5	7.4	1
3	WB2502-PTB03-BH-K	SM(A)W250-3A-BH	5	9.9	1.2
4	WB2502-PTB04-BH-K	SM(A)W250-4A-BH	7.5	12.4	2
5	WB2502-PTB05-BH-K	SM(A)W250-5A-BH	10	14.9	2
6	WB2502-PTB06-BH-K	SM(A)W250-6A-BH	12.5	17.4	8.6
7	WB2502-PTB07-BH-K	SM(A)W250-7A-BH	15	19.9	11.1
8	WB2502-PTB08-BH-K	SM(A)W250-8A-BH	17.5	22.4	13.6
9	WB2502-PTB09-BH-K	SM(A)W250-9A-BH	20	24.9	16.1
10	WB2502-PTB10-BH-K	SM(A)W250-10A-BH	22.5	27.4	18.6
11	WB2502-PTB11-BH-K	SM(A)W250-11A-BH	25	29.9	21.1
12	WB2502-PTB12-BH-K	SM(A)W250-12A-BH	27.5	32.4	23.6
13	WB2502-PTB13-BH-K	SM(A)W250-13A-BH	30	34.9	26.1
14	WB2502-PTB14-BH-K	SM(A)W250-14A-BH	32.5	37.4	28.6
15	WB2502-PTB15-BH-K	SM(A)W250-15A-BH	35	39.9	31.1
16	WB2502-PTB16-BH-K	SM(A)W250-16A-BH	37.5	42.4	33.6

2	Pin	Tin Plated Brass	N						
1	Housing	PA9T (UL94V-0)	1						
No.	Item/Material No.	Material	QTY	Remark					
Unmarked Tolerance		Yueqing Hegxing Electronics Co., Ltd							
X. ° ±3° X. X. ° ±0.5°									
>0-3	>3-18	>18-50	>50-120	Unit	Scale	Design Unit	Size	Part No.	
±0.12	±0.15	±0.3	±0.5	mm	—	Metric	A4		
Draw	Review	Approve	Material	Drawing No.	Part No.				
				Item	SM(A)W250-NA-BH wide lock				

SM(A)W250 Type Wafer



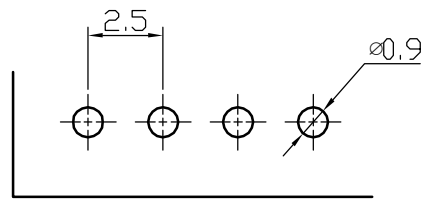
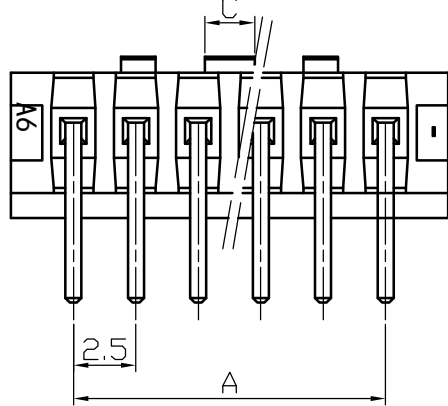
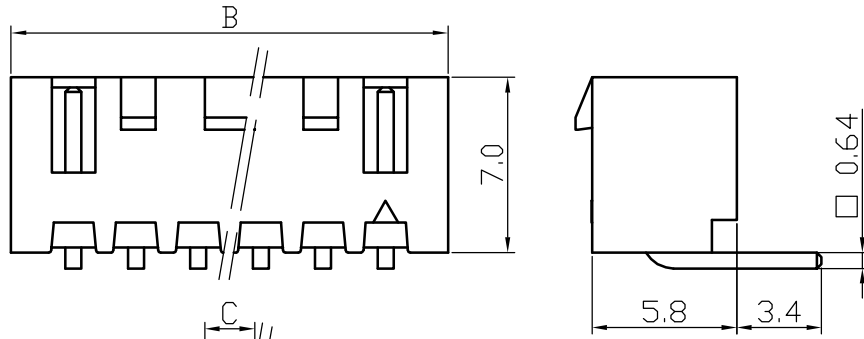
PCB Layout

Poles	Part No.		Dimensions		
			A	B	C
2	WB2502-PTB02-BH-K	SM(A)W250-2A-BH	2.5	7.4	1
3	WB2502-PTB03-BH-K	SM(A)W250-3A-BH	5	9.9	1.2
4	WB2502-PTB04-BH-K	SM(A)W250-4A-BH	7.5	12.4	2
5	WB2502-PTB05-BH-K	SM(A)W250-5A-BH	10	14.9	2
6	WB2502-PTB06-BH-K	SM(A)W250-6A-BH	12.5	17.4	8.6
7	WB2502-PTB07-BH-K	SM(A)W250-7A-BH	15	19.9	11.1
8	WB2502-PTB08-BH-K	SM(A)W250-8A-BH	17.5	22.4	13.6
9	WB2502-PTB09-BH-K	SM(A)W250-9A-BH	20	24.9	16.1
10	WB2502-PTB10-BH-K	SM(A)W250-10A-BH	22.5	27.4	18.6
11	WB2502-PTB11-BH-K	SM(A)W250-11A-BH	25	29.9	21.1
12	WB2502-PTB12-BH-K	SM(A)W250-12A-BH	27.5	32.4	23.6
13	WB2502-PTB13-BH-K	SM(A)W250-13A-BH	30	34.9	26.1
14	WB2502-PTB14-BH-K	SM(A)W250-14A-BH	32.5	37.4	28.6
15	WB2502-PTB15-BH-K	SM(A)W250-15A-BH	35	39.9	31.1
16	WB2502-PTB16-BH-K	SM(A)W250-16A-BH	37.5	42.4	33.6

2	Pin	Tin Plated Brass	N						
1	Housing	PA9T (UL94V-0)	1						
No.	Item/Material No.	Material	QTY	Remark					
Unmarked Tolerance		Yueqing Hegxing Electronics Co., Ltd							
X. ° ±3° X. X° ±0.5°									
>0-3	>3-18	>18-50	>50-120	Unit	Scale	Design Unit	Size	Part No.	
±0.12	±0.15	±0.3	±0.5	mm	—	Metric	A4		
Draw	Review	Approve	Material	Drawing No.	Part No.				
				Item	SM(A)W250-NA-BH wide lock & convex pin				



SM(A)W250 Type Wafer

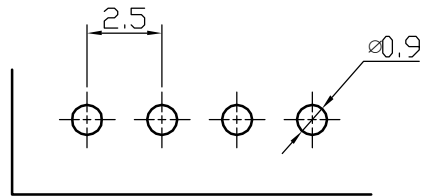
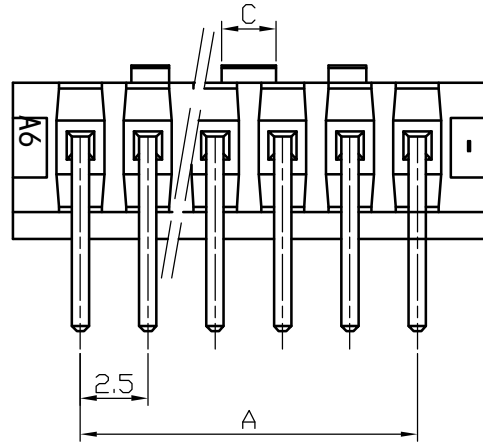
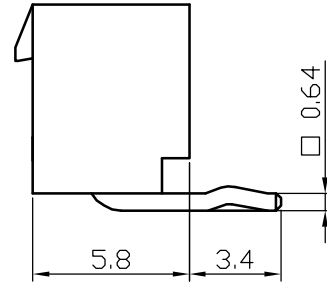
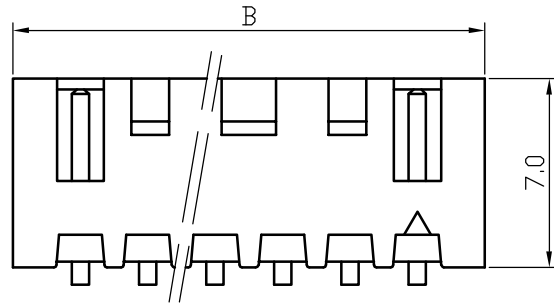


PCB Layout

Poles	Part No.		Dimensions		
			A	B	C
2	WB2502-PS02	SM(A)W250-2AW	2.5	7.5	1
3	WB2502-PS03	SM(A)W250-3AW	5	10	1.2
4	WB2502-PS04	SM(A)W250-4AW	7.5	12.5	2
5	WB2502-PS05	SM(A)W250-5AW	10	15	2
6	WB2502-PS06	SM(A)W250-6AW	12.5	17.5	8.6
7	WB2502-PS07	SM(A)W250-7AW	15	20	11.1
8	WB2502-PS08	SM(A)W250-8AW	17.5	22.5	13.6
9	WB2502-PS09	SM(A)W250-9AW	20	25	16.1
10	WB2502-PS10	SM(A)W250-10AW	22.5	27.5	18.6
11	WB2502-PS11	SM(A)W250-11AW	25	30	21.1
12	WB2502-PS12	SM(A)W250-12AW	27.5	32.5	23.6
13	WB2502-PS13	SM(A)W250-13AW	30	35	26.1
14	WB2502-PS14	SM(A)W250-14AW	32.5	37.5	28.6
15	WB2502-PS15	SM(A)W250-15AW	35	40	31.1
16	WB2502-PS16	SM(A)W250-16AW	37.5	42.5	33.6
17	WB2502-PS17	SM(A)W250-17AW	40	45	36.1
18	WB2502-PS18	SM(A)W250-18AW	42.5	47.5	38.6
19	WB2502-PS19	SM(A)W250-19AW	45	50	41.1
20	WB2502-PS20	SM(A)W250-20AW	47.5	52.5	43.6




2	Pin	Tin Plated Brass	N						
1	Housing	PA9T (UL94V-0)	1						
No.	Item/Material No.	Material	QTY	Remark					
Unmarked Tolerance		Yueqing Hegxing Electronics Co., Ltd							
X. ° ±3° X. X° ±0.5°									
>0-3	>3-18	>18-50	>50-120	Unit	Scale	Design Unit	Size	Part No.	
±0.12	±0.15	±0.3	±0.5	mm	—	Metric	A4		
Draw	Review	Approve	Material	Drawing No.	Part No.				
				Item	SM(A)W250-NAW				

SM(A)W250 Type Wafer

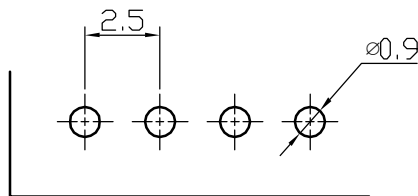
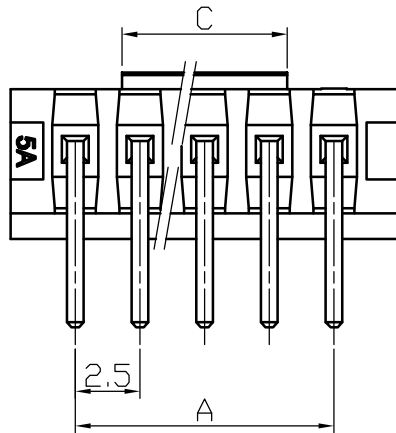
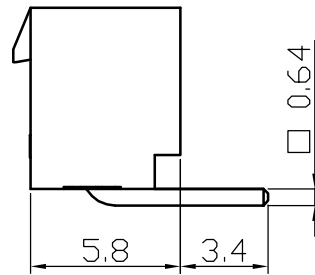
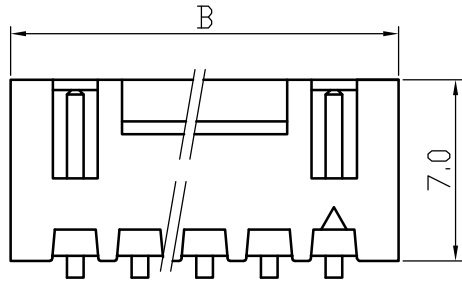


PCB Layout

Poles	Part No.		Dimensions		
			A	B	C
2	WB2502-PS02-K	SM(A)W250-2AW	2.5	7.5	1
3	WB2502-PS03-K	SM(A)W250-3AW	5	10	1.2
4	WB2502-PS04-K	SM(A)W250-4AW	7.5	12.5	2
5	WB2502-PS05-K	SM(A)W250-5AW	10	15	2
6	WB2502-PS06-K	SM(A)W250-6AW	12.5	17.5	8.6
7	WB2502-PS07-K	SM(A)W250-7AW	15	20	11.1
8	WB2502-PS08-K	SM(A)W250-8AW	17.5	22.5	13.6
9	WB2502-PS09-K	SM(A)W250-9AW	20	25	16.1
10	WB2502-PS10-K	SM(A)W250-10AW	22.5	27.5	18.6
11	WB2502-PS11-K	SM(A)W250-11AW	25	30	21.1
12	WB2502-PS12-K	SM(A)W250-12AW	27.5	32.5	23.6
13	WB2502-PS13-K	SM(A)W250-13AW	30	35	26.1
14	WB2502-PS14-K	SM(A)W250-14AW	32.5	37.5	28.6
15	WB2502-PS15-K	SM(A)W250-15AW	35	40	31.1
16	WB2502-PS16-K	SM(A)W250-16AW	37.5	42.5	33.6
17	WB2502-PS17-K	SM(A)W250-17AW	40	45	36.1
18	WB2502-PS18-K	SM(A)W250-18AW	42.5	47.5	38.6
19	WB2502-PS19-K	SM(A)W250-19AW	45	50	41.1
20	WB2502-PS20-K	SM(A)W250-20AW	47.5	52.5	43.6




2	Pin	Tin Plated Brass	N						
1	Housing	PA9T (UL94V-0)	1						
No.	Item/Material No.	Material	QTY	Remark					
Unmarked Tolerance		 Yueqing Hegxing Electronics Co., Ltd							
X. ° ±3°	X. X° ±0.5°								
>0-3	>3-18	>18-50	>50-120	Unit	Scale	Design Unit	Size	Part No.	 
±0.12	±0.15	±0.3	±0.5	mm	—	Metric	A4		
Draw	Review	Approve	Material	Drawing No.	Part No.				
				Item	SM(A)W250-NAW convex pin				

SM(A)W250 Type Wafer

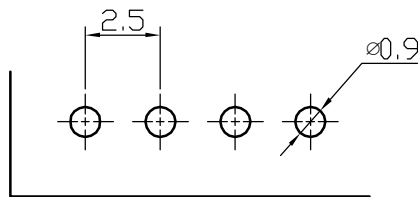
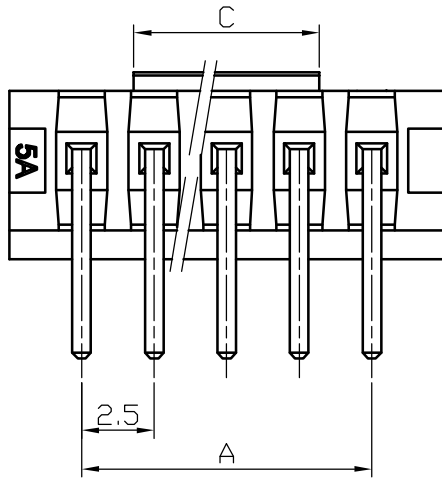
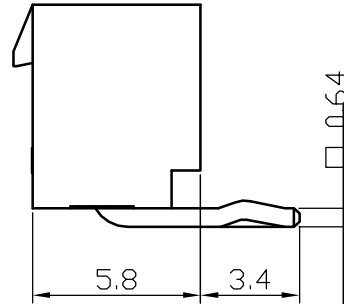
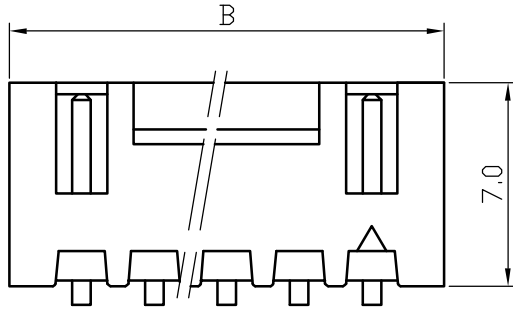


PCB Layout

Poles	Part No.		Dimensions		
			A	B	C
2	WB2502-PSB02	SM(A)W250-2AW	2.5	7.5	1
3	WB2502-PSB03	SM(A)W250-3AW	5	10	1.2
4	WB2502-PSB04	SM(A)W250-4AW	7.5	12.5	2
5	WB2502-PSB05	SM(A)W250-5AW	10	15	2
6	WB2502-PSB06	SM(A)W250-6AW	12.5	17.5	8.6
7	WB2502-PSB07	SM(A)W250-7AW	15	20	11.1
8	WB2502-PSB08	SM(A)W250-8AW	17.5	22.5	13.6
9	WB2502-PSB09	SM(A)W250-9AW	20	25	16.1
10	WB2502-PSB10	SM(A)W250-10AW	22.5	27.5	18.6
11	WB2502-PSB11	SM(A)W250-11AW	25	30	21.1
12	WB2502-PSB12	SM(A)W250-12AW	27.5	32.5	23.6
13	WB2502-PSB13	SM(A)W250-13AW	30	35	26.1
14	WB2502-PSB14	SM(A)W250-14AW	32.5	37.5	28.6
15	WB2502-PSB15	SM(A)W250-15AW	35	40	31.1
16	WB2502-PSB16	SM(A)W250-16AW	37.5	42.5	33.6
17	WB2502-PSB17	SM(A)W250-17AW	40	45	36.1
18	WB2502-PSB18	SM(A)W250-18AW	42.5	47.5	38.6
19	WB2502-PSB19	SM(A)W250-19AW	45	50	41.1
20	WB2502-PSB20	SM(A)W250-20AW	47.5	52.5	43.6


2	Pin	Tin Plated Brass	N						
1	Housing	PA9T (UL94V-0)	1						
No.	Item/Material No.	Material	QTY	Remark					
Unmarked Tolerance		 Yueqing Hegxing Electronics Co., Ltd							
X. ° ±3°	X. X° ±0.5°								
>0-3	>3-18	>18-50	>50-120	Unit	Scale	Design Unit	Size	Part No.	 
±0.12	±0.15	±0.3	±0.5	mm	—	Metric	A4		
Draw	Review	Approve	Material	Drawing No.	Part No.				
				Item	SM(A)W250-NAW wide lock				

SM(A)W250 Type Wafer

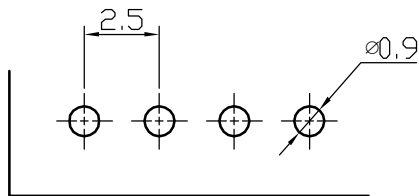
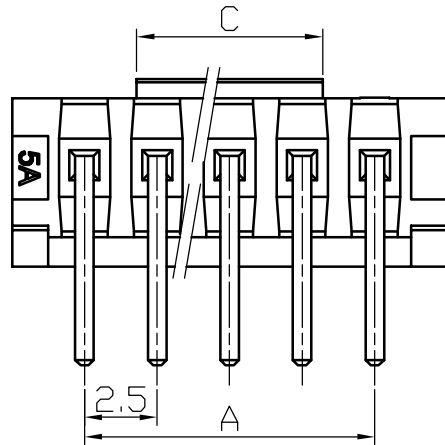
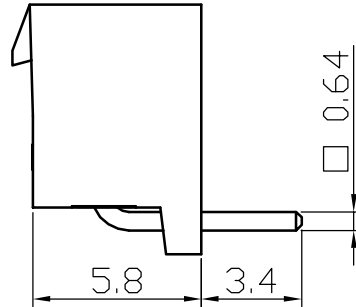
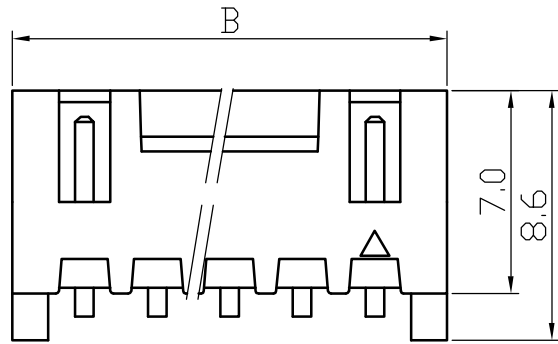


PCB Layout

Poles	Part No.		Dimensions		
			A	B	C
2	WB2502-PSB02-K	SM(A)W250-2AW	2.5	7.5	1
3	WB2502-PSB03-K	SM(A)W250-3AW	5	10	1.2
4	WB2502-PSB04-K	SM(A)W250-4AW	7.5	12.5	2
5	WB2502-PSB05-K	SM(A)W250-5AW	10	15	2
6	WB2502-PSB06-K	SM(A)W250-6AW	12.5	17.5	8.6
7	WB2502-PSB07-K	SM(A)W250-7AW	15	20	11.1
8	WB2502-PSB08-K	SM(A)W250-8AW	17.5	22.5	13.6
9	WB2502-PSB09-K	SM(A)W250-9AW	20	25	16.1
10	WB2502-PSB10-K	SM(A)W250-10AW	22.5	27.5	18.6
11	WB2502-PSB11-K	SM(A)W250-11AW	25	30	21.1
12	WB2502-PSB12-K	SM(A)W250-12AW	27.5	32.5	23.6
13	WB2502-PSB13-K	SM(A)W250-13AW	30	35	26.1
14	WB2502-PSB14-K	SM(A)W250-14AW	32.5	37.5	28.6
15	WB2502-PSB15-K	SM(A)W250-15AW	35	40	31.1
16	WB2502-PSB16-K	SM(A)W250-16AW	37.5	42.5	33.6
17	WB2502-PSB17-K	SM(A)W250-17AW	40	45	36.1
18	WB2502-PSB18-K	SM(A)W250-18AW	42.5	47.5	38.6
19	WB2502-PSB19-K	SM(A)W250-19AW	45	50	41.1
20	WB2502-PSB20-K	SM(A)W250-20AW	47.5	52.5	43.6




2	Pin	Tin Plated Brass	N	
1	Housing	PA9T (UL94V-0)	1	
No.	Item/Material No.	Material	QTY	Remark
Unmarked Tolerance		 Yueqing Hegxing Electronics Co., Ltd		
X. ° ±3°	X. X° ±0.5°			
>0-3	>3-18	>18-50	>50-120	Unit
±0.12	±0.15	±0.3	±0.5	Scale
				Design Unit
				Size
				Part No.
				Item
				Part No.
				Item
				SM(A)W250-NAW wide lock & convex pin

SM(A)W250 Type Wafer

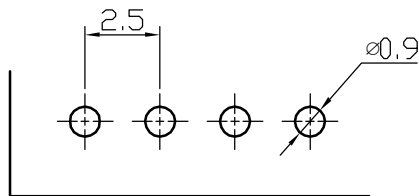
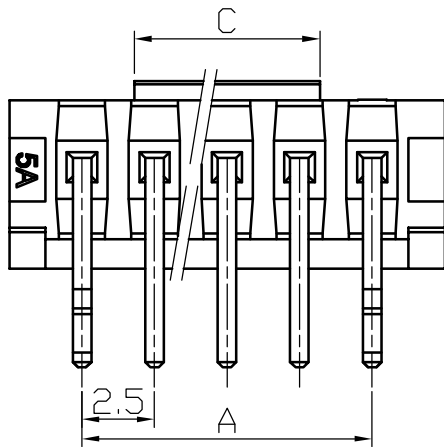
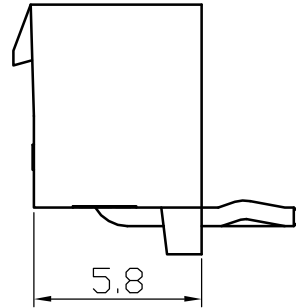
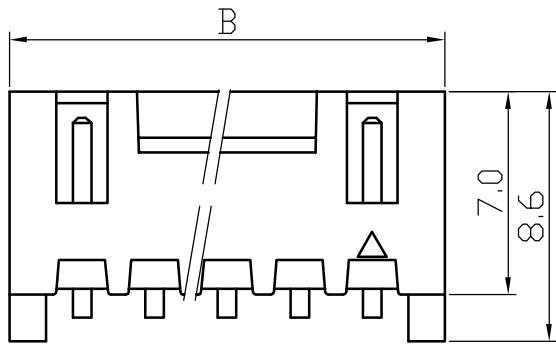


PCB Layout

Poles	Part No.		Dimensions		
			A	B	C
2	WB2502-PSC02	SM(A)W250-2AWD	2.5	7.5	1
3	WB2502-PSC03	SM(A)W250-3AWD	5	10	1.2
4	WB2502-PSC04	SM(A)W250-4AWD	7.5	12.5	2
5	WB2502-PSC05	SM(A)W250-5AWD	10	15	2
6	WB2502-PSC06	SM(A)W250-6AWD	12.5	17.5	8.6
7	WB2502-PSC07	SM(A)W250-7AWD	15	20	11.1
8	WB2502-PSC08	SM(A)W250-8AWD	17.5	22.5	13.6
9	WB2502-PSC09	SM(A)W250-9AWD	20	25	16.1
10	WB2502-PSC10	SM(A)W250-10AWD	22.5	27.5	18.6
11	WB2502-PSC11	SM(A)W250-11AWD	25	30	21.1
12	WB2502-PSC12	SM(A)W250-12AWD	27.5	32.5	23.6
13	WB2502-PSC13	SM(A)W250-13AWD	30	35	26.1
14	WB2502-PSC14	SM(A)W250-14AWD	32.5	37.5	28.6
15	WB2502-PSC15	SM(A)W250-15AWD	35	40	31.1
16	WB2502-PSC16	SM(A)W250-16AWD	37.5	42.5	33.6
17	WB2502-PSC17	SM(A)W250-17AWD	40	45	36.1
18	WB2502-PSC18	SM(A)W250-18AWD	42.5	47.5	38.6
19	WB2502-PSC19	SM(A)W250-19AWD	45	50	41.1
20	WB2502-PSC20	SM(A)W250-20AWD	47.5	52.5	43.6




2	Pin	Tin Plated Brass	N	
1	Housing	PA9T (UL94V-0)	1	
No.	Item/Material No.	Material	QTY	Remark
Unmarked Tolerance		 Yueqing Hegxing Electronics Co., Ltd		
X. ° ±3°	X. X° ±0.5°			
>0-3	>3-18	>18-50	>50-120	Unit
±0.12	±0.15	±0.3	±0.5	Scale
				Design Unit
				Size
				Part No.
				 
Draw	Review	Approve	Material	Drawing No.
				Part No.
				Item
				SM(A)W250-NAWD wide lock

SM(A)W250 Type Wafer



PCB Layout

Poles	Part No.		Dimensions		
			A	B	C
2	WB2502-PSC02-K	SM(A)W250-2AWD	2.5	7.5	1
3	WB2502-PSC03-K	SM(A)W250-3AWD	5	10	1.2
4	WB2502-PSC04-K	SM(A)W250-4AWD	7.5	12.5	2
5	WB2502-PSC05-K	SM(A)W250-5AWD	10	15	2
6	WB2502-PSC06-K	SM(A)W250-6AWD	12.5	17.5	8.6
7	WB2502-PSC07-K	SM(A)W250-7AWD	15	20	11.1
8	WB2502-PSC08-K	SM(A)W250-8AWD	17.5	22.5	13.6
9	WB2502-PSC09-K	SM(A)W250-9AWD	20	25	16.1
10	WB2502-PSC10-K	SM(A)W250-10AWD	22.5	27.5	18.6
11	WB2502-PSC11-K	SM(A)W250-11AWD	25	30	21.1
12	WB2502-PSC12-K	SM(A)W250-12AWD	27.5	32.5	23.6
13	WB2502-PSC13-K	SM(A)W250-13AWD	30	35	26.1
14	WB2502-PSC14-K	SM(A)W250-14AWD	32.5	37.5	28.6
15	WB2502-PSC15-K	SM(A)W250-15AWD	35	40	31.1
16	WB2502-PSC16-K	SM(A)W250-16AWD	37.5	42.5	33.6
17	WB2502-PSC17-K	SM(A)W250-17AWD	40	45	36.1
18	WB2502-PSC18-K	SM(A)W250-18AWD	42.5	47.5	38.6
19	WB2502-PSC19-K	SM(A)W250-19AWD	45	50	41.1
20	WB2502-PSC20-K	SM(A)W250-20AWD	47.5	52.5	43.6

2	Pin	Tin Plated Brass	N	
1	Housing	PA9T (UL94V-0)	1	
No.	Item/Material No.	Material	QTY	Remark
Unmarked Tolerance		 Yueqing Hegxing Electronics Co., Ltd		
X. ° ±3°	X. X° ±0.5°			
>0-3	>3-18	>18-50	>50-120	Unit
±0.12	±0.15	±0.3	±0.5	mm
Scale	Design Unit	Size	Part No.	 
—	Metric	A4		
Draw	Review	Approve	Material	Drawing No.
			Item	SM(A)W250-NAWD wide lock & convex pin